

## Strep-tag II Antibody

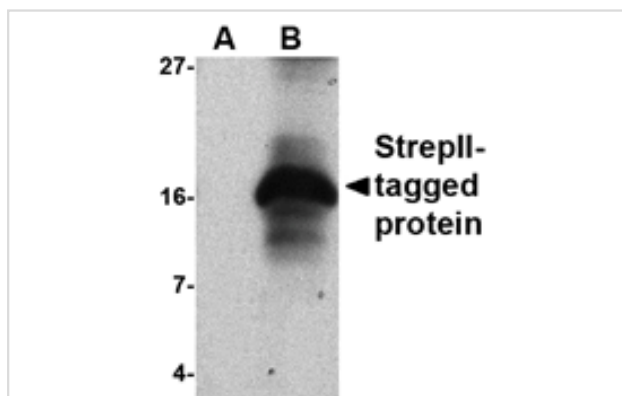
Catalog No: #24533

Orders: [order@signalwayantibody.com](mailto:order@signalwayantibody.com)Support: [tech@signalwayantibody.com](mailto:tech@signalwayantibody.com)

## Description

Product Name	Strep-tag II Antibody
Host Species	Rabbit
Clonality	Polyclonal
Purification	Affinity chromatography purified via peptide column
Applications	ELISA WB
Immunogen Type	Peptide
Immunogen Description	Raised against the amino acid sequence $\Gamma$ B $\Gamma$ °gggWSHPQFEK $\Gamma$ B $\Gamma$ ±.
Target Name	Strep-tag II
Other Names	Strep-tag II (IN), StrepII-tag
Concentration	1mg/ml
Formulation	Supplied in PBS containing 0.02% sodium azide.
Storage	Can be stored at -20°C, stable for one year. As with all antibodies care should be taken to avoid repeated freeze thaw cycles. Antibodies should not be exposed to prolonged high temperatures.

## Images



Western blot analysis of 50ng of StrepII-tagged recombinant protein with StrepII antibody at 1 ug/mL in (A) the absence or (B) the presence of blocking peptide.

## Background

Streptavidin is a tetrameric protein purified from *Streptomyces avidinii*. It has wide use in numerous molecular biological protocols due to its strong affinity for biotin. The original Strep-tag is a nine amino acid peptide with high specificity and affinity towards streptavidin. The addition of this tag to the C-terminus of recombinant proteins allowed the simple purification of protein by use of affinity columns. It was re-engineered (and re-named Strep-tag II) to allow it to also be placed at the N-terminus of recombinant proteins.

Note: This product is for in vitro research use only