

Bub3 Antibody

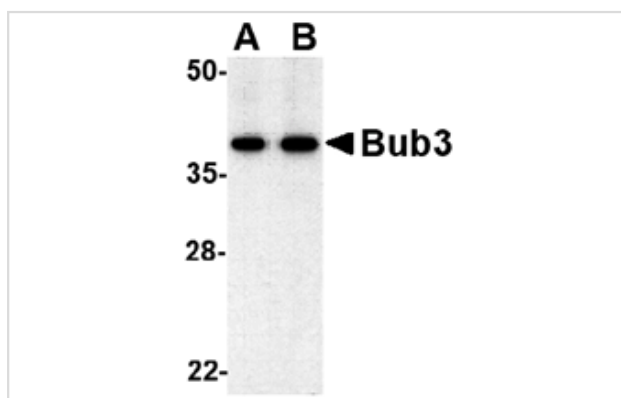
Catalog No: #24534

Orders: order@signalwayantibody.comSupport: tech@signalwayantibody.com

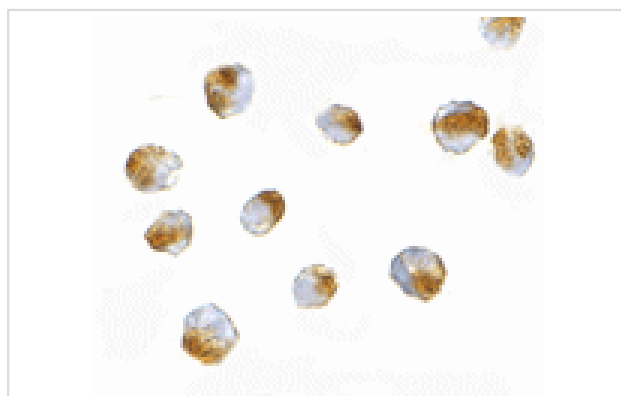
Description

Product Name	Bub3 Antibody
Host Species	Rabbit
Clonality	Polyclonal
Purification	Affinity chromatography purified via peptide column
Applications	ELISA WB ICC
Species Reactivity	Hu Ms
Immunogen Type	Peptide
Immunogen Description	Raised against a 16 amino acid peptide from near the carboxy terminus of human bub3.
Target Name	Bub3
Other Names	Budding uninhibited by benzimidazoles 3, Bub3L
Accession No.	O43684
Uniprot	O43684
GeneID	9184;
Concentration	1mg/ml
Formulation	Supplied in PBS containing 0.02% sodium azide.
Storage	Can be stored at -20°C, stable for one year. As with all antibodies care should be taken to avoid repeated freeze thaw cycles. Antibodies should not be exposed to prolonged high temperatures.

Images



Western blot analysis of bub3 in Jurkat cell lysate with bub3 antibody at (A) 0.5 and (B) 1 ug/mL.



Immunocytochemistry of Bub3 in Jurkat cells with Bub3 antibody at 10 ug/mL.

Background

The mitotic checkpoint protein Bub3 is involved with the essential spindle checkpoint pathway which operates during early embryogenesis. Bub3 is important during G2 and early mitosis stages, permitting entry into mitosis depending upon the assembly state of microtubules, thus preventing premature sister chromatid separation, mis-segregation and aneuploidy. Bub3 contains four WD repeat domains and is required for the kinetochore localization of Bub1, a related kinase that is necessary for spindle assembly checkpoint function. Bub1 is able to autophosphorylate and can catalyze the phosphorylation of Bub3. Both Bub1 and Bub3 are mutually dependent for function. Altered Bub expression levels may significantly impair mitotic checkpoint function and is associated with tumor cell proliferation.

Note: This product is for in vitro research use only