

Bub1 Antibody

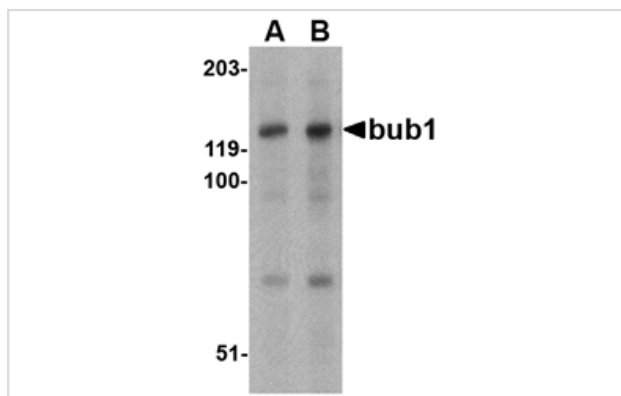
Catalog No: #24539

Orders: order@signalwayantibody.comSupport: tech@signalwayantibody.com

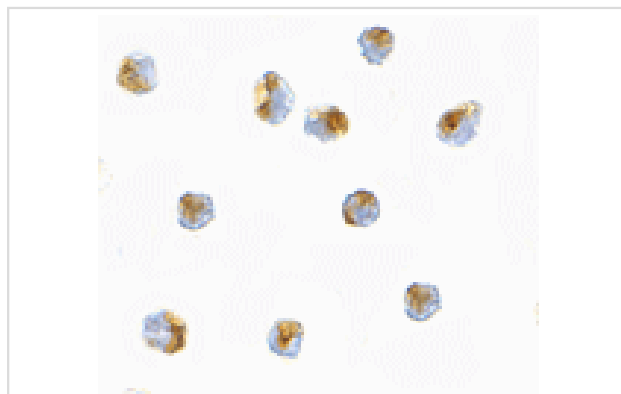
Description

Product Name	Bub1 Antibody
Host Species	Rabbit
Clonality	Polyclonal
Purification	Affinity chromatography purified via peptide column
Applications	ELISA WB ICC
Species Reactivity	Hu Rt
Immunogen Type	Peptide
Immunogen Description	Raised against a 22 amino acid peptide from near the carboxy terminus of human Bub1.
Target Name	Bub1
Other Names	Budding uninhibited by benzimidazoles 1
Accession No.	O43683
Uniprot	O43683
GeneID	699;
Concentration	1mg/ml
Formulation	Supplied in PBS containing 0.02% sodium azide.
Storage	Can be stored at -20°C, stable for one year. As with all antibodies care should be taken to avoid repeated freeze thaw cycles. Antibodies should not be exposed to prolonged high temperatures.

Images



Western blot analysis of bub1 in A-20 cell lysate with bub1 antibody at (A) 1 and (B) 2 ug/mL.



Immunocytochemistry of Bub1 in A20 cells with Bub1 antibody at 5 ug/mL.

Background

Bub1 was initially identified as the mammalian homolog to the yeast protein through a cDNA screen. Bub1 encodes a kinase involved in the formation of the spindle checkpoint, an important mechanism that ensures high fidelity mitotic chromosome segregation. It is thought to be required for assembly of a functional inner centromere, sister chromatid cohesion via targeting of the Shugoshim protein and metaphase congression. Bub1 functions by phosphorylating cdc20, a member of the mitotic checkpoint complex and activating the spindle checkpoint. A related protein kinase Bub3 interacts with Bub1 and targets it to kinetochores prior to chromosome alignment. Mutations in bub1 have been associated with aneuploidy and several forms of cancer.

Note: This product is for in vitro research use only