

IFN-beta Antibody

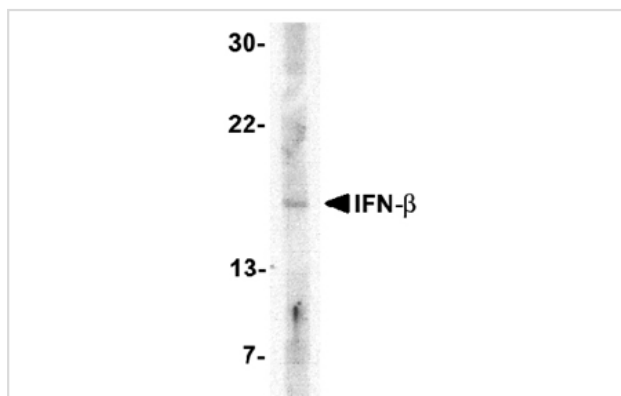
Catalog No: #24540

Orders: order@signalwayantibody.comSupport: tech@signalwayantibody.com

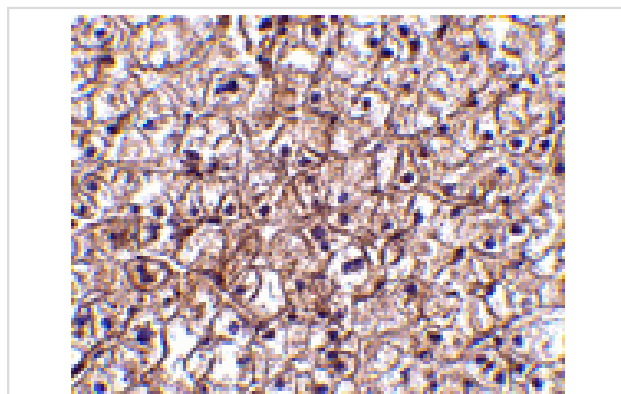
Description

Product Name	IFN-beta Antibody
Host Species	Rabbit
Clonality	Polyclonal
Purification	Affinity chromatography purified via peptide column
Applications	ELISA WB IHC
Species Reactivity	Hu Ms
Immunogen Type	Peptide
Immunogen Description	Raised against a 17 amino acid peptide from near the center of human IFN- β .
Target Name	IFN-beta
Other Names	Interferon beta, beta-interferon
Accession No.	Swiss-Prot:P01574Gene ID:3456
Uniprot	P01574
GeneID	3456;
Concentration	1mg/ml
Formulation	Supplied in PBS containing 0.02% sodium azide.
Storage	Can be stored at -20°C, stable for one year. As with all antibodies care should be taken to avoid repeated freeze thaw cycles. Antibodies should not be exposed to prolonged high temperatures.

Images



Western blot analysis of IFN- β in A-20 cell lysate with IFN- β antibody at 5 μ g/mL.



Immunohistochemistry of IFN- β in human liver tissue with IFN- β antibody at 5 μ g/mL.

Background

Type I Interferons (IFN-alpha/beta) are produced primarily in response to viral infection by "Natural IFN-producing cells" (IPCs) as part of the host immune response and can also inhibit the development of tumors. IFN-beta binding by its receptor results in the activation of the tyrosine kinases Jak1 and Tyk2 and phosphorylation of members of the STAT family of transcription factors, leading to the transcription and expression of the immune response genes. More recently, several members of the toll-like receptor (TLR) family were found to stimulate the production IFN-beta. IFN-beta is currently used clinically for treatment of tumors, infections and multiple sclerosis.

Note: This product is for in vitro research use only