

HSF1(phospho-Ser303) Antibody

Catalog No: #11263

Package Size: #11263-1 50ul #11263-2 100ul

Orders: order@signalwayantibody.comSupport: tech@signalwayantibody.com

Description

Product Name	HSF1(phospho-Ser303) Antibody
Host Species	Rabbit
Clonality	Polyclonal
Purification	Antibodies were produced by immunizing rabbits with synthetic phosphopeptide and KLH conjugates. Antibodies were purified by affinity-chromatography using epitope-specific phosphopeptide. Non-phospho specific antibodies were removed by chromatography using non-phosphopeptide.
Applications	WB IHC
Species Reactivity	Hu
Specificity	The antibody detects endogenous level of HSF1 only when phosphorylated at serine 303.
Immunogen Type	Peptide-KLH
Immunogen Description	Peptide sequence around phosphorylation site of serine 303 (P-P-S(p)-P-P) derived from Human HSF1.
Target Name	HSF1
Modification	Phospho
Other Names	HSTF 1
Accession No.	Swiss-Prot: Q00613NCBI Protein: NP_005517.1
Uniprot	Q00613
GeneID	3297;
Concentration	1.0mg/ml
Formulation	Supplied at 1.0mg/mL in phosphate buffered saline (without Mg ²⁺ and Ca ²⁺), pH 7.4, 150mM NaCl, 0.02% sodium azide and 50% glycerol.
Storage	Store at -20°C for long term preservation (recommended). Store at 4°C for short term use.

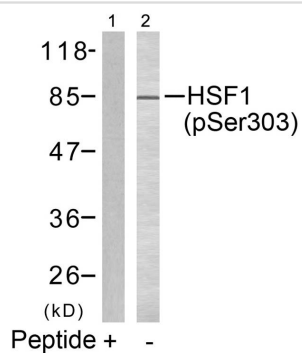
Application Details

Predicted MW: 82kd

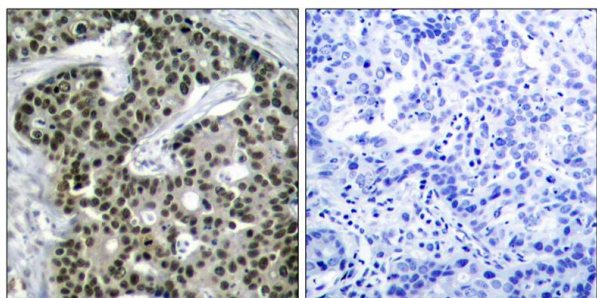
Western blotting: 1:500~1:1000

Immunohistochemistry: 1:50~1:100

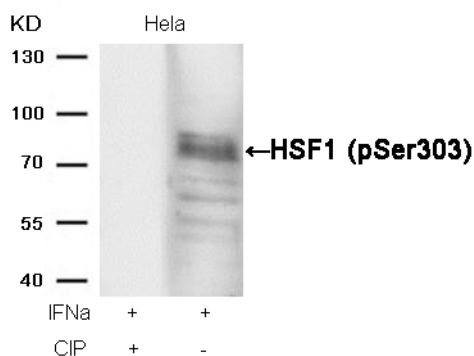
Images



Western blot analysis of extracts from MCF7 cells using HSF1(phospho-Ser303) Antibody #11263(Lane 2) and the same antibody preincubated with blocking peptide(Lane1).



Immunohistochemical analysis of paraffin-embedded human breast carcinoma tissue using HSF1(Phospho-Ser303) Antibody #11263(left) or the same antibody preincubated with blocking peptide(right).



Western blot analysis of extracts from HeLa cells, treated with IFN α or calf intestinal phosphatase (CIP), using HSF1 (phospho-Ser303) Antibody #11263.

Background

DNA-binding protein that specifically binds heat shock promoter elements (HSE) and activates transcription. In higher eukaryotes, HSF is unable to bind to the HSE unless the cells are heat shocked.

Parvaneh Rafiee, et.al. (2006) Am J Physiol Cell Physiol ; 291: C931 - C945

Fumika Shinozaki, et.al. (2006) J. Biol. Chem ; 281: 16361 - 16369.

Eiichi Takaki, et.al. (2006) J. Biol. Chem ; 281: 4931 - 4937.

Jan-Jong Hung, et.al. (1998) J. Biol. Chem ; 273: 31924.

Note: This product is for in vitro research use only