

Recombinant Calloselasma rhodostoma Snaclec rhodocytin subunit beta

Catalog No: #AP74438

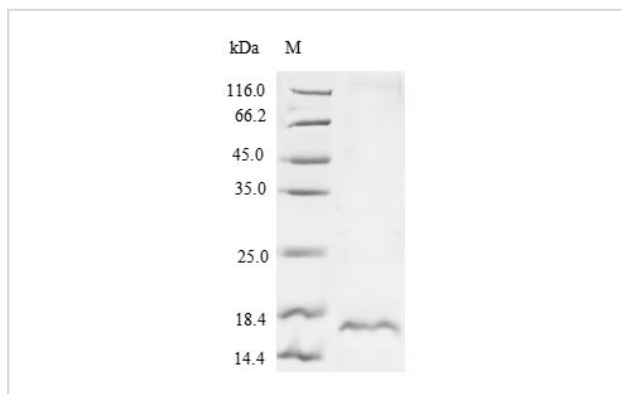
Orders: order@signalwayantibody.comSupport: tech@signalwayantibody.com

Package Size: #AP74438-1 20ug #AP74438-2 100ug #AP74438-3 1mg

Description

Product Name	Recombinant Calloselasma rhodostoma Snaclec rhodocytin subunit beta
Brief Description	Recombinant Protein
Host Species	Yeast
Purification	Greater than 90% as determined by SDS-PAGE.
Immunogen Description	Expression Region:24-146aaSequence Info:Full Length
Other Names	Aggretin beta chain Rhodoaggretin subunit beta
Accession No.	Q9I840
Uniprot	Q9I840
Calculated MW	16.4 kDa
Tag Info	N-terminal 6xHis-tagged
Target Sequence	DCPSGWSSYEGHCYKPFNEPKNWADAERFCKLQPKHSHLVSFQSAAEADFVVKLTRPRLKANLVVMGLSNI WHGCNWQWSDGARLNYKDWQEQSECLAFRGVHTEWLNMDCSSTCSFVCKFKA
Formulation	Tris-based buffer50% glycerol
Storage	The shelf life is related to many factors, storage state, buffer ingredients, storage temperature and the stability of the protein itself. Generally, the shelf life of liquid form is 6 months at -20°C,-80°C. The shelf life of lyophilized form is 12 months at -20°C,-80°C.Notes:Repeated freezing and thawing is not recommended. Store working aliquots at 4°C for up to one week.

Images



Background

Elicits platelet aggregation by the binding to the C-type lectin domain family 1 member B (CLEC1B,CLEC2). Binding leads to tyrosine phosphorylation in the Cytoplasmic domain tail of CLEC1B, which promotes the binding of spleen tyrosine kinase (Syk), subsequent activation of PLCgamma2, and platelet activation and aggregation. Binding to GPIIb/IIIa (alpha2beta1) and alpha2beta1 (ITGA2,ITGB1) may also induce aggregation, but this is controversial.

References

Molecular cloning and sequence analysis of aggretin, a collagen-like platelet aggregation inducer. Chung C.-H., Au L.-C., Huang T.-F. *Biochem. Biophys. Res. Commun.* 263:723-727(1999)
Research Topic: Others

Note: This product is for in vitro research use only