

STEAP2 Antibody

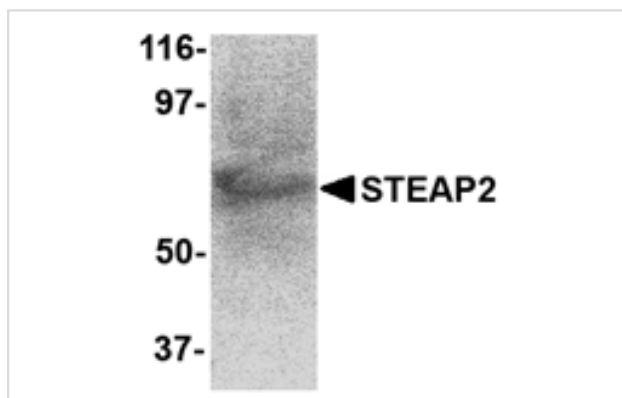
Catalog No: #24567

Orders: order@signalwayantibody.comSupport: tech@signalwayantibody.com

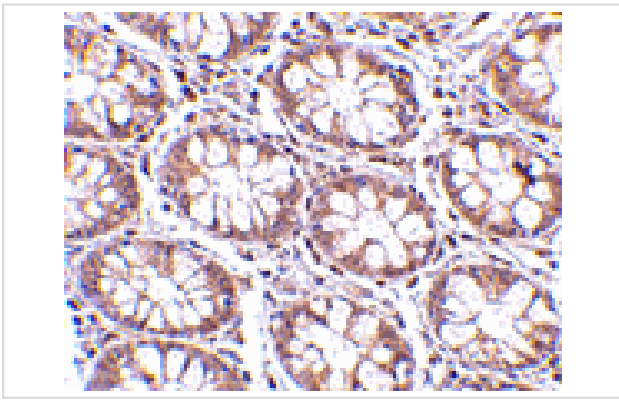
Description

Product Name	STEAP2 Antibody
Host Species	Rabbit
Clonality	Polyclonal
Purification	Affinity chromatography purified via peptide column
Applications	ELISA WB IHC
Species Reactivity	Hu Ms
Specificity	This STEAP2 antibody does not cross-react with other STEAP proteins.
Immunogen Type	Peptide
Immunogen Description	Raised against a 16 amino acid peptide from near the carboxy terminus of human STEAP2.
Target Name	STEAP2
Other Names	Six transmembrane epithelial antigen of prostate 2
Accession No.	Q8NFT2
Uniprot	Q8NFT2
GeneID	261729;
Concentration	1mg/ml
Formulation	Supplied in PBS containing 0.02% sodium azide.
Storage	Can be stored at -20°C, stable for one year. As with all antibodies care should be taken to avoid repeated freeze thaw cycles. Antibodies should not be exposed to prolonged high temperatures.

Images



Western blot analysis of STEAP2 in human prostate tissue lysate with STEAP2 antibody at 1 ug/mL.



Immunohistochemistry of STEAP2 in human colon tissue with STEAP2 antibody at 2.5 ug/mL.

Background

The six-transmembrane epithelial antigen of prostate 2 (STEAP2) is a member of a family of metalloreductases identified as cell-surface antigens in prostate tissue. Similar to two other members of the STEAP family (STEAP 3 and STEAP4), STEAP2 promotes both iron and copper reduction. STEAP2 expression in transfected cells also correlated with iron or copper uptake, suggesting that the STEAP family of proteins may function to stimulate iron and copper uptake. STEAP2 is widely expressed in many tissues in the plasma membrane, but is most highly expressed in prostate. At least three isoforms of STEAP2 are known to exist.

Note: This product is for in vitro research use only