

STEAP4 Antibody

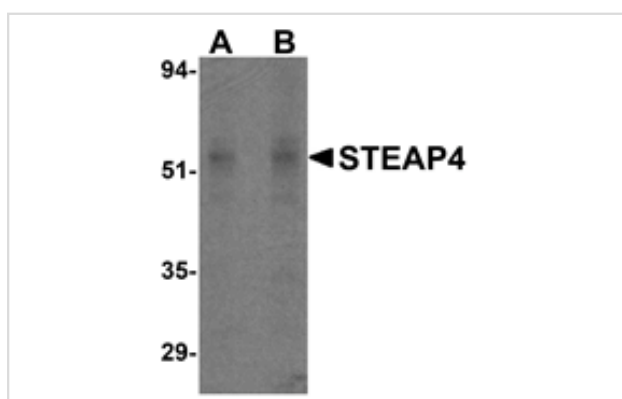
Catalog No: #24569

Orders: order@signalwayantibody.comSupport: tech@signalwayantibody.com

Description

Product Name	STEAP4 Antibody
Host Species	Rabbit
Clonality	Polyclonal
Purification	Affinity chromatography purified via peptide column
Applications	ELISA WB
Species Reactivity	Hu Ms Rt
Specificity	At least two isoforms are known to exist for this protein. This STEAP4 antibody does not cross-react with other STEAP proteins.
Immunogen Type	Peptide
Immunogen Description	Raised against a 14 amino acid peptide from near the center of human STEAP4.
Target Name	STEAP4
Other Names	Six transmembrane epithelial antigen of prostate 4, STAMP2
Accession No.	Swiss-Prot:Q687X5 Gene ID:79689
Uniprot	Q687X5
GeneID	79689;
Concentration	1mg/ml
Formulation	Supplied in PBS containing 0.02% sodium azide.
Storage	Can be stored at -20°C, stable for one year. As with all antibodies care should be taken to avoid repeated freeze thaw cycles. Antibodies should not be exposed to prolonged high temperatures.

Images



Western blot analysis of STEAP4 in rat liver tissue lysate with STEAP4 antibody at (A) 0.5 and (B) 1 ug/mL.

Background

The six-transmembrane epithelial antigen of prostate 4 (STEAP4) is a member of a family of metalloreductases identified as cell-surface antigens in prostate tissue. Similar to two other members of the STEAP family (STEAP 2 and STEAP3), STEAP4 promotes both iron and copper reduction. STEAP4 is highly expressed in placenta, lung, heart and prostate tissues, and overexpressed in prostate cancer cells compared to normal prostate cells. Overexpression of STEAP4 in prostate cells significantly increases cell growth and colony formation, suggesting STEAP4 may have a role in cell proliferation and prostate cancer progression.

Note: This product is for in vitro research use only