

BRCC45 Antibody

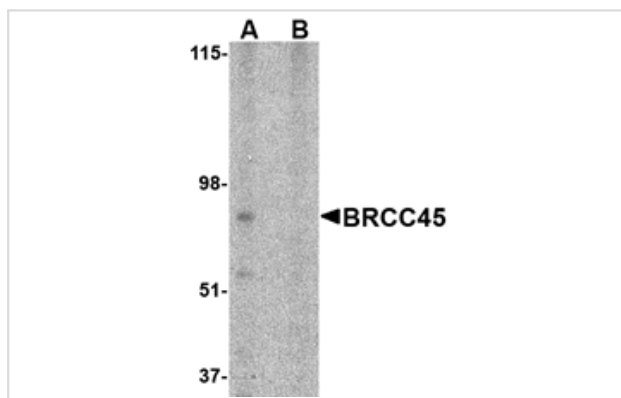
Catalog No: #24575

Orders: order@signalwayantibody.comSupport: tech@signalwayantibody.com

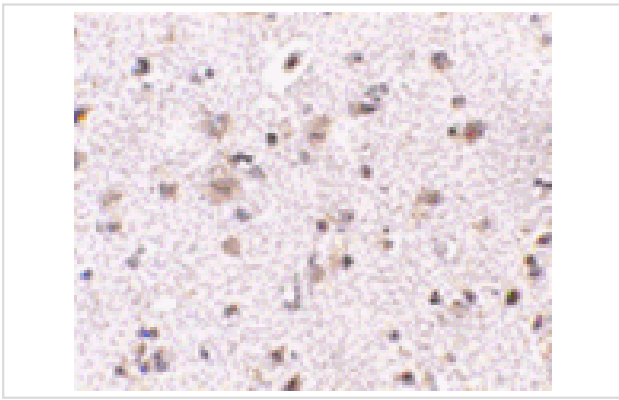
Description

Product Name	BRCC45 Antibody
Host Species	Rabbit
Clonality	Polyclonal
Purification	Affinity chromatography purified via peptide column
Applications	ELISA WB IHC
Species Reactivity	Hu Ms Rt
Immunogen Type	Peptide
Immunogen Description	Raised against a 18 amino acid peptide from near the amino terminus of human BRCC45.
Target Name	BRCC45
Other Names	BRCA1, BRCA2-containing complex subunit 45, Brain and reproductive organ expressed, BRE, TNFRSF1A modulator
Accession No.	Swiss-Prot:Q9NXR7Gene ID:9577
Uniprot	Q9NXR7
GeneID	9577;
Concentration	1mg/ml
Formulation	Supplied in PBS containing 0.02% sodium azide.
Storage	Can be stored at -20°C, stable for one year. As with all antibodies care should be taken to avoid repeated freeze thaw cycles. Antibodies should not be exposed to prolonged high temperatures.

Images



Western blot analysis of BRCC45 in HeLa cell lysate in (A) the absence and (B) presence of blocking peptide with BRCC45 antibody at 1 ug/mL.



Immunohistochemistry of BRCC45 in human brain tissue with BRCC45 antibody at 2.5 ug/mL.

Background

BRCC45 was initially suggested to be a housekeeping protein that is highly expressed in brain and reproductive organs. Later experiments indicated BRCC45 forms a complex with the breast and ovarian predisposition proteins BRCA1 and BRCA2 as well as RAD51 and BRCC36. This complex has a ubiquitin E3 ligase activity and is thought to enhance cellular survival following DNA damage. BRCC45 has also been suggested to function as a death receptor-associated anti-apoptotic protein by inhibiting the BID-induced activation of the mitochondrial apoptotic pathway. Higher levels of BRCC45 were detected in the majority of hepatocellular carcinomas, suggesting that BRCC45 may promote tumorigenesis when overexpressed. At least three isoforms of BRCC45 are known to exist.

Note: This product is for in vitro research use only