

Recombinant Glycine max Seed biotin-containing protein SBP65(SBP65)

Catalog No: #AP74615

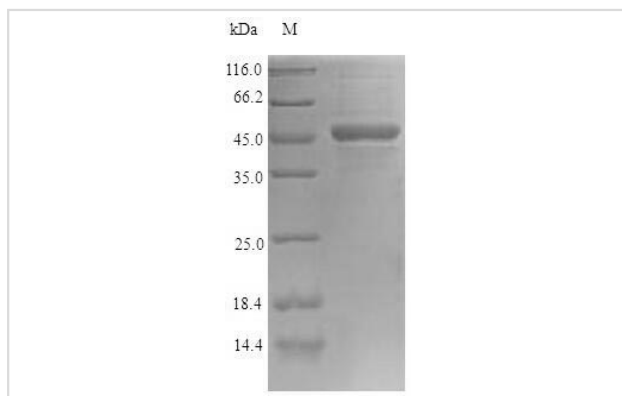
Orders: order@signalwayantibody.comSupport: tech@signalwayantibody.com

Package Size: #AP74615-1 20ug #AP74615-2 100ug #AP74615-3 1mg

Description

Product Name	Recombinant Glycine max Seed biotin-containing protein SBP65(SBP65)
Brief Description	Recombinant Protein
Host Species	E.coli
Purification	Greater than 90% as determined by SDS-PAGE.
Immunogen Description	Expression Region:1-255aaSequence Info:Full Length
Other Names	BP75 Seed biotinylated protein of 65KDA
Accession No.	Q39846
Uniprot	Q39846
GeneID	547879;
Calculated MW	44 kDa
Tag Info	C-terminal 6xHis-tagged
Target Sequence	MASEQLARRENTTTEKEIHVEKHRVPMATHFEHLAEQAKESDITAGKDTTPQGSIEALQAGERVKDHAGKAM GDIGGRGKARETHELGAHFESLADKVTDHAAANVVGNKESQREARGGV RDVGVKGFEMRTEGGEKGNKDRPE LKTRTREVIGRTEKERGRESGGQVVAEKGRETETARGRVAENEGARTTAVITCTLEKGGGTQKPIREEERE SESERSAWEQISNYSDQATQGVKEKYERAKQAASET LNNTT
Formulation	Tris-based buffer50% glycerol
Storage	The shelf life is related to many factors, storage state, buffer ingredients, storage temperature and the stability of the protein itself. Generally, the shelf life of liquid form is 6 months at -20°C,-80°C. The shelf life of lyophilized form is 12 months at -20°C,-80°C.Notes:Repeated freezing and thawing is not recommended. Store working aliquots at 4°C for up to one week.

Images



Background

May serve as a biotin provider for several growth-limiting enzymes that are necessary during seed development and the subsequent germination stages, and thus may play some roles in determining seed germination capacity.

References

"Tissue- and stage-specific expression of a soybean (*Glycine max* L.) seed-maturation, biotinylated protein."Hsing Y.-C., Tsou C.-H., Hsu T.-F., Chen Z.-Y., Hsieh K.-L., Hsieh J.-S., Chow T.-Y.*Plant Mol. Biol.* 38:481-490(1998)

Research Topic:Microbiology

Note: This product is for in vitro research use only