

Plxdc2 Antibody

Catalog No: #24616

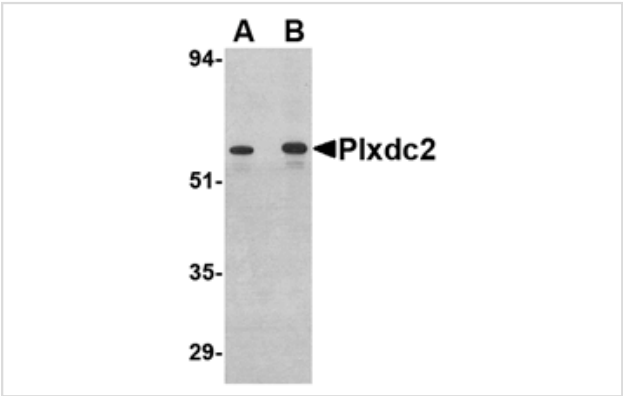


Orders: [order@signalwayantibody.com](mailto:order@signalwayantibody.com)  
Support: [tech@signalwayantibody.com](mailto:tech@signalwayantibody.com)

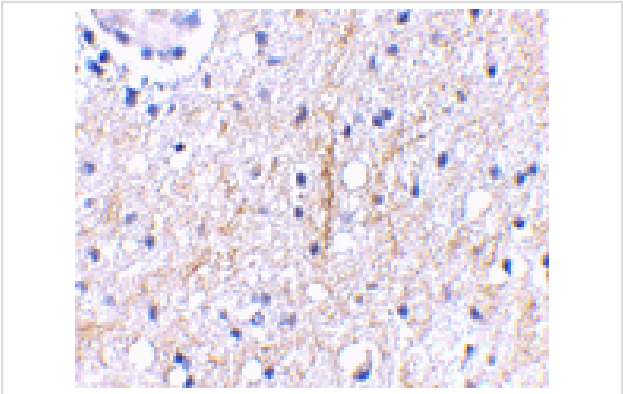
Description

Product Name	Plxdc2 Antibody
Host Species	Rabbit
Clonality	Polyclonal
Purification	Affinity chromatography purified via peptide column
Applications	ELISA WB IHC
Species Reactivity	Hu Ms Rt
Immunogen Type	Peptide
Immunogen Description	Raised against a 17 amino acid peptide from near the carboxy terminus of human Plxdc2.
Target Name	Plxdc2
Other Names	Plexin domain-containing protein 2, Tumor endothelial marker 7-related protein, TEM7R
Accession No.	Q6UX71
Uniprot	Q6UX71
GeneID	84898;
Concentration	1mg/ml
Formulation	Supplied in PBS containing 0.02% sodium azide.
Storage	Can be stored at -20°C, stable for one year. As with all antibodies care should be taken to avoid repeated freeze thaw cycles. Antibodies should not be exposed to prolonged high temperatures.

Images



Western blot analysis of Plxdc2 in human colon tissue lysate with Plxdc2 antibody at (A) 0.5 (B) 1 ug/mL.



Immunohistochemical staining of human brain tissue using Plxdc2 antibody at 2.5 ug/mL.

## Background

Plxdc2, also known as Tumor endothelial marker 7-related (TEM7R) encodes a protein with 57% amino acid identity to TEM7, the most abundant tumor endothelial marker. Plxdc2 is strongly expressed in the endothelial cells of the tumor stroma, but not in the endothelial cells of normal colonic tissue. Plxdc2 is also expressed at high levels in vessels of some normal tissues, with highest expression in muscle and lung. Plxdc2 and TEM7 may be important for tumor angiogenesis in humans. Cortactin was identified as a protein capable of binding to the extracellular region of both TEM7 and Plxdc2, and may provide new opportunities for the delivery of therapeutic and imaging agents to the vessels of solid tumors.

Note: This product is for in vitro research use only