

LGI1 Antibody

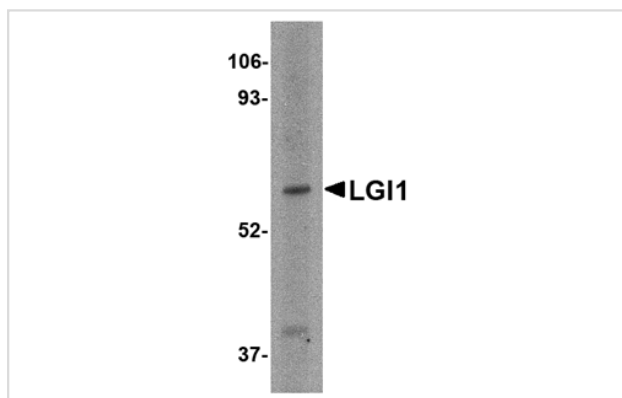
Catalog No: #24642

Orders: order@signalwayantibody.comSupport: tech@signalwayantibody.com

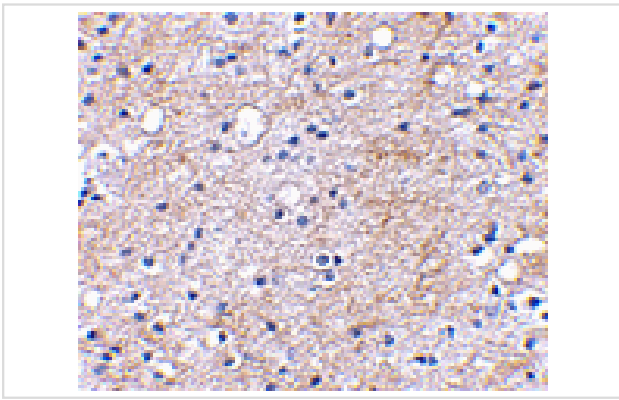
Description

Product Name	LGI1 Antibody
Host Species	Rabbit
Clonality	Polyclonal
Purification	Affinity chromatography purified via peptide column
Applications	ELISA WB IHC
Species Reactivity	Hu Ms Rt
Specificity	This LGI1 antibody is predicted to be specific to LGI1 and not recognize other LGI proteins.
Immunogen Type	Peptide
Immunogen Description	Raised against a 14 amino acid peptide from near the center of human LGI1.
Target Name	LGI1
Other Names	Leucine-rich, glioma inactivated 1, epitempin, EPT
Accession No.	Swiss-Prot:O95970Gene ID:9211
Uniprot	O95970
GeneID	9211;
Concentration	1mg/ml
Formulation	Supplied in PBS containing 0.02% sodium azide.
Storage	Can be stored at -20°C, stable for one year. As with all antibodies care should be taken to avoid repeated freeze thaw cycles. Antibodies should not be exposed to prolonged high temperatures.

Images



Western blot analysis of LGI1 in HeLa cell lysate with LGI1 antibody at 2 ug/mL.



Immunohistochemical staining of human brain tissue using LGI1 antibody at 2.5 ug/mL.

Background

The leucine-rich, glioma inactivated gene 1 (LGI1) was first identified as a candidate tumor suppressor gene for glioma and may play a role in other cancers. LGI1 is a member of a family of highly related proteins containing leucine-rich repeats (LRRs) which are highly similar to other transmembrane signaling molecules and receptors. LGI1 serves as a ligand to ADAM22, a metalloprotease localized at the synapse. Mutations in LGI1 account for nearly half of autosomal recessive lateral temporal epilepsy (ADTLE), an epileptic syndrome characterized by focal seizures with predominant auditory symptoms. Two isoforms of LGI1 are known to exist; this LGI1 antibody will recognize only the longer form.

Note: This product is for in vitro research use only