

PARL Antibody

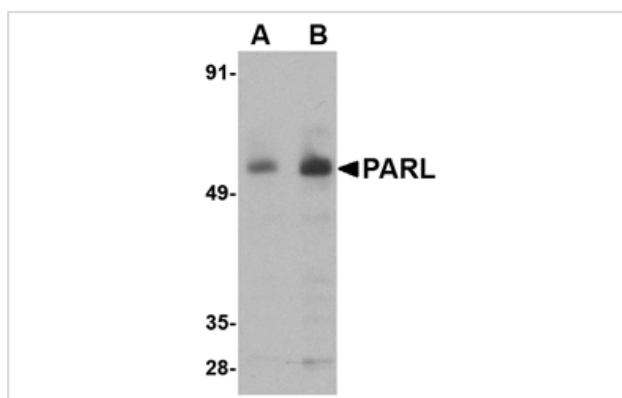
Catalog No: #24739

Orders: order@signalwayantibody.comSupport: tech@signalwayantibody.com

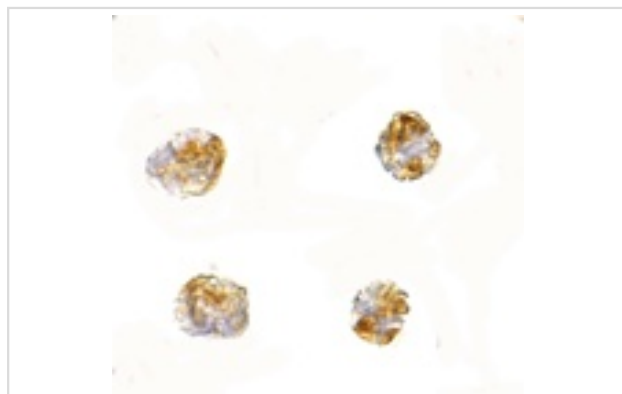
Description

Product Name	PARL Antibody
Host Species	Rabbit
Clonality	Polyclonal
Purification	Affinity chromatography purified via peptide column
Applications	ELISA WB ICC
Species Reactivity	Hu Ms Rt
Immunogen Type	Peptide
Immunogen Description	Raised against a 15 amino acid peptide from near the amino terminus of human PARL.
Target Name	PARL
Other Names	Presenilin-associated rhomboid-like protein, PSARL, PSARL1, PSNENIP2
Accession No.	Q9H300
Uniprot	Q9H300
GeneID	55486;
Concentration	1mg/ml
Formulation	Supplied in PBS containing 0.02% sodium azide.
Storage	Can be stored at -20°C, stable for one year. As with all antibodies care should be taken to avoid repeated freeze thaw cycles. Antibodies should not be exposed to prolonged high temperatures.

Images



Western blot analysis of PARL in 3T3 cell lysate with PARL antibody at (A) 1 and (B) 2 ug/mL.



Immunocytochemistry of PARL in 3T3 cells with PARL antibody at 2.5 ug/mL.

Background

PARL is a mitochondrial integral membrane protein and a member of the highly conserved rhomboid superfamily of membrane proteins. PARL is required for the control of apoptosis during postnatal growth and is required for the processing of OPA1, a protein that prevents the release of cytochrome C from the mitochondria in response to apoptotic signals. In lymphocytes and neurons, PARL's association with other proteins, such as the Bcl-2 family-related protein Hax1 and Omi can lead to the proteolytic processing of Omi by PARL, preventing the accumulation of Bax, thereby suppressing apoptosis. Variations in this gene have been associated with increased risk for type 2 diabetes. PARL may also play a role in the progression of Alzheimer's disease through its associations with presenilin-1 and -2. Multiple isoforms of PARL are known to exist.

Note: This product is for in vitro research use only