

Aldh3A1 Antibody

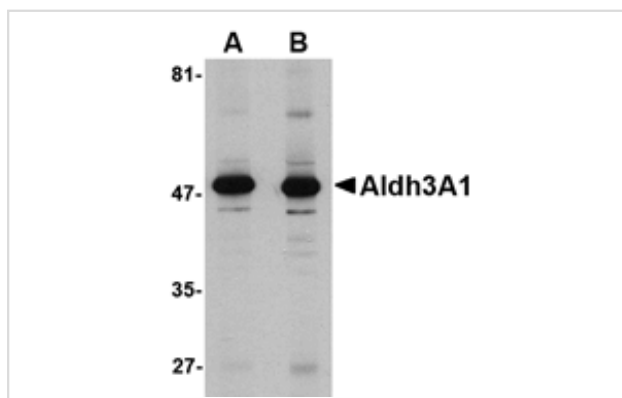
Catalog No: #24749

Orders: order@signalwayantibody.comSupport: tech@signalwayantibody.com

Description

Product Name	Aldh3A1 Antibody
Host Species	Rabbit
Clonality	Polyclonal
Purification	Affinity chromatography purified via peptide column
Applications	ELISA WB
Species Reactivity	Hu Ms Rt
Specificity	At least two isoforms of Aldh3A1 are known to exist. This antibody is predicted to have no cross-reactivity to Aldh3A2.
Immunogen Type	Peptide
Immunogen Description	Raised against a 13 amino acid peptide near the carboxy terminus of the human Aldh3A1.
Target Name	Aldh3A1
Other Names	Aldehyde dehydrogenase family3 member A1, AldhIII
Accession No.	Swiss-Prot:P30838Gene ID:218
Uniprot	P30838
GeneID	218;
Concentration	1mg/ml
Formulation	Supplied in PBS containing 0.02% sodium azide.
Storage	Can be stored at -20°C, stable for one year. As with all antibodies care should be taken to avoid repeated freeze thaw cycles. Antibodies should not be exposed to prolonged high temperatures.

Images



Western blot analysis of Aldh3A1 in human stomach lysate with Aldh3A1 antibody at (A) 1 and (B) 2 ug/mL.

Background

Aldh3A1 is a member of the aldehyde dehydrogenase superfamily, a group of NAD(P)(+)-dependent enzymes that catalyze the oxidation of a wide spectrum of aliphatic and aromatic aldehydes. Aldh3A1 is highly expressed in stomach and even more strongly in cornea, representing between 5 to 50% of the water soluble protein fraction in mammalian corneas. It is thought that Aldh3A1 acts to protect the cornea from UV-induced oxidative stress by not only detoxification of reactive aldehydes by also through the direct absorption of UV energy. However, corneas from Aldh3A1-null mice are indistinguishable from those from wild-type mice; mice lacking both Aldh3A1 and Aldh1A1 showed increased cataract formation following UVB

exposure, suggesting that Aldh1A1 may be able to compensate for the loss of Aldh3A1.

Note: This product is for in vitro research use only