

## HINT1 Antibody

Catalog No: #24763

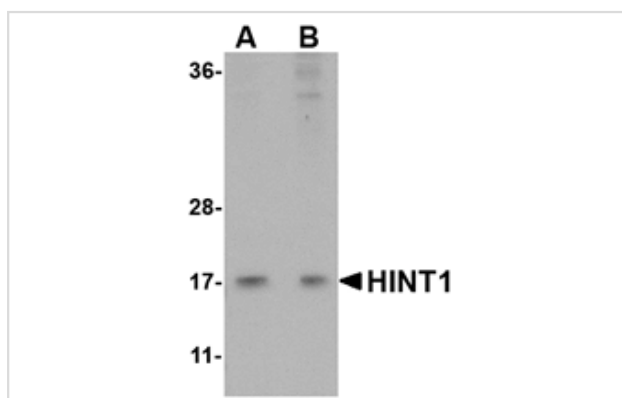
Orders: order@signalwayantibody.com

Support: tech@signalwayantibody.com

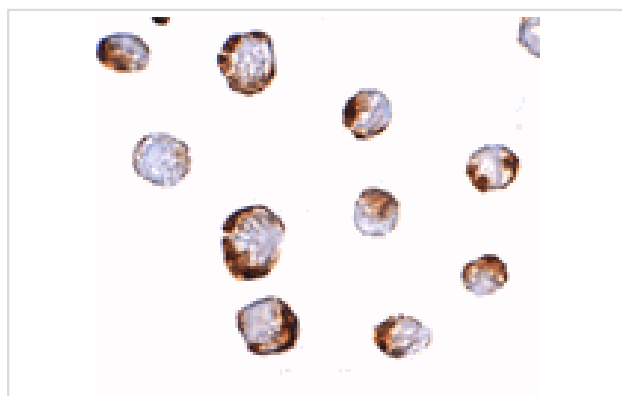
## Description

Product Name	HINT1 Antibody
Host Species	Rabbit
Clonality	Polyclonal
Purification	Affinity chromatography purified via peptide column
Applications	ELISA WB ICC
Species Reactivity	Hu Ms Rt
Immunogen Type	Peptide
Immunogen Description	Raised against a 17 amino acid peptide near the center of the human HINT1.
Target Name	HINT1
Other Names	HINT1, Histidine triad nucleotide-binding protein 1, HINT, PKC inhibitory protein, PKCI-1
Accession No.	Swiss-Prot:P49773Gene ID:3094
Uniprot	P49773
GeneID	3094;
Concentration	1mg/ml
Formulation	Supplied in PBS containing 0.02% sodium azide.
Storage	Can be stored at -20°C, stable for one year. As with all antibodies care should be taken to avoid repeated freeze thaw cycles. Antibodies should not be exposed to prolonged high temperatures.

## Images



Western blot analysis of HINT1 in Jurkat lysate with HINT1 antibody at (A) 1 and (B) 2 ug/mL.



Immunocytochemistry of HINT1 in Jurkat cells with HINT1 antibody at 2.5 ug/mL.

## Background

---

Histidine triad nucleotide-binding protein 1 (HINT1) is a member of the histidine triad (HIT) protein family, a group of small nucleotide-binding and -hydrolyzing proteins. HINT1 interacts with several diverse proteins and has been suggested to have tumor suppressive activities. HINT1 catalyzes the hydrolysis of adenosine 5'-monophosphate substrates such as AMP-morpholidate, but its enzymatic function does not appear to play a role in its tumor suppression. Recent experiments demonstrate that HINT1 forms a complex with POSH and JNK in vivo, inhibiting AP-1 activity and the phosphorylation of c-Jun, and this action could contribute to the tumor suppressor activity of HINT1. Other studies raise the possibility of HINT1 as a candidate gene for schizophrenia.

---

Note: This product is for in vitro research use only