

Integrin alpha 4 Antibody

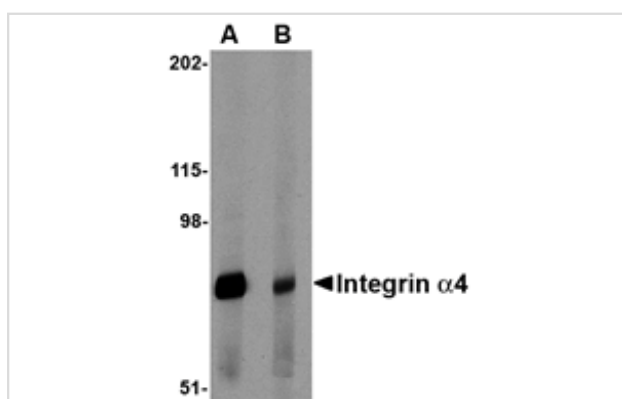
Catalog No: #24770

Orders: order@signalwayantibody.comSupport: tech@signalwayantibody.com

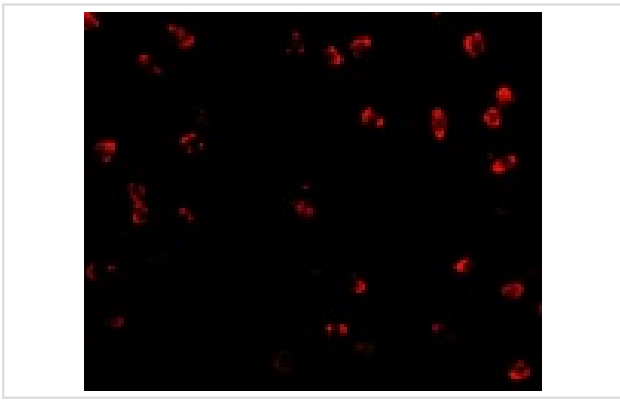
Description

Product Name	Integrin alpha 4 Antibody
Host Species	Rabbit
Clonality	Polyclonal
Purification	Affinity chromatography purified via peptide column
Applications	ELISA WB IF
Species Reactivity	Hu Ms Rt
Specificity	At least two isoforms are known to exist. The immunogen to this antibody is within the Integrin alpha4 recombinant protein fragment and thus will recognize it.
Immunogen Type	Peptide
Immunogen Description	Raised against a 15 amino acid peptide from near the center of human Integrin alpha 4.
Target Name	Integrin alpha 4
Other Names	CD49d, ITGA4, IA4, alpha 4 subunit of VLA-4 receptor
Accession No.	P13612
Uniprot	P13612
GeneID	3676;
Concentration	1mg/ml
Formulation	Supplied in PBS containing 0.02% sodium azide.
Storage	Antibody can be stored at 4°C up to one year. Antibodies should not be exposed to prolonged high temperatures.

Images



Western blot analysis of Integrin alpha 4 in rat spleen tissue lysate with Integrin alpha 4 antibody at 1 ug/mL in (A) the absence and (B) the presence of blocking peptide.



Immunofluorescence of Integrin alpha 4 in Jurkat cells with Integrin alpha 4 antibody at 2 ug/mL.

Background

The integrin alpha 4 (also known as CD49d and ITGA4) belongs to the integrin alpha chain family of proteins. Integrins are heterodimeric integral membrane proteins composed of an alpha and beta chains. Alpha4 chain associates with either beta1 or beta7 chain. It has been demonstrated that the putative ligand-binding sites of both integrin alpha4beta1 and alpha4beta7 is located on the alpha4 chain. These ligands included Madcam, VCAM, and fibronectin. Madcam is known as the principal ligand for integrin alpha4beta7. Recently it was also demonstrated that HIV-1 envelope can mimic Madcam by binding to and signaling through integrin alpha4beta7, the gut mucosal homing receptor for peripheral T cells.

Note: This product is for in vitro research use only