

Spred2 Antibody

Catalog No: #24774

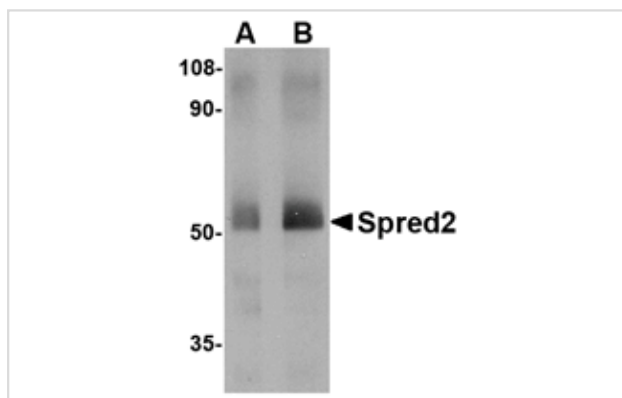
Orders: order@signalwayantibody.com

Support: tech@signalwayantibody.com

Description

Product Name	Spred2 Antibody
Host Species	Rabbit
Clonality	Polyclonal
Purification	Affinity chromatography purified via peptide column
Applications	ELISA WB
Species Reactivity	Hu
Specificity	This Spred2 antibody is predicted to have no cross-reactivity to Spred1 or Spred3.
Immunogen Type	Peptide
Immunogen Description	Raised against a 13 amino acid peptide near the center of the human Spred2.
Target Name	Spred2
Other Names	Sprouty-related EVH1 domain-containing protein 2
Accession No.	Swiss-Prot:Q7Z698Gene ID:200734
Uniprot	Q7Z698
GeneID	200734;
Concentration	1mg/ml
Formulation	Supplied in PBS containing 0.02% sodium azide.
Storage	Can be stored at -20°C, stable for one year. As with all antibodies care should be taken to avoid repeated freeze thaw cycles. Antibodies should not be exposed to prolonged high temperatures.

Images



Western blot analysis of Spred2 in human small intestine tissue lysate with Spred2 antibody at (A) 1 and (B) 2 ug/mL.

Background

Spred2 is a member of the Sprouty family, a group of proteins that act as negative regulators during development. Like Spred1, Spred2 acts by suppressing the phosphorylation and activation of Raf. The Spred proteins have also been implicated in the negative feedback regulation of FGF signaling in embryogenesis and angiogenesis. Further studies have shown that expression levels of Spred1 and Spred2 proteins are inversely correlated with the incidence of tumor invasion and metastasis in human hepatocellular carcinoma (HCC), suggesting that these proteins could be useful as prognostic factors and therapeutic targets in HCC. At least two isoforms of Spred2 are known to exist.

Note: This product is for in vitro research use only