

Keratin 8(Phospho-Ser74) Antibody

Catalog No: #11307

Package Size: #11307-1 50ul #11307-2 100ul

Orders: order@signalwayantibody.comSupport: tech@signalwayantibody.com

Description

Product Name	Keratin 8(Phospho-Ser74) Antibody
Host Species	Rabbit
Clonality	Polyclonal
Purification	Antibodies were produced by immunizing rabbits with synthetic phosphopeptide and KLH conjugates. Antibodies were purified by affinity-chromatography using epitope-specific phosphopeptide. Non-phospho specific antibodies were removed by chromatography using non-phosphopeptide.
Applications	WB IF
Species Reactivity	Hu
Specificity	The antibody detects endogenous level of Keratin 8 only when phosphorylated at serine 74.
Immunogen Type	Peptide-KLH
Immunogen Description	Peptide sequence around phosphorylation site of serine 74 (L-L-S(p)-P-L) derived from Human Keratin 8 (CK8).
Target Name	Keratin 8
Modification	Phospho
Other Names	CK 8; CK8; CYK8; Cytokeratin endo A; K8
Accession No.	Swiss-Prot: P05787NCBI Protein: NP_002264.1
Uniprot	P05787
GeneID	3856;
Concentration	1.0mg/ml
Formulation	Supplied at 1.0mg/mL in phosphate buffered saline (without Mg ²⁺ and Ca ²⁺), pH 7.4, 150mM NaCl, 0.02% sodium azide and 50% glycerol.
Storage	Store at -20°C for long term preservation (recommended). Store at 4°C for short term use.

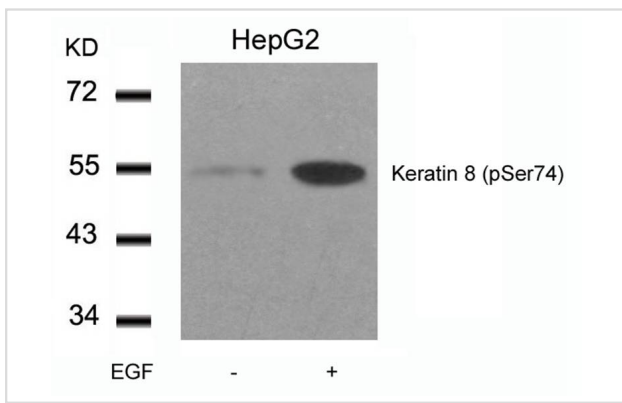
Application Details

Predicted MW: 55kd

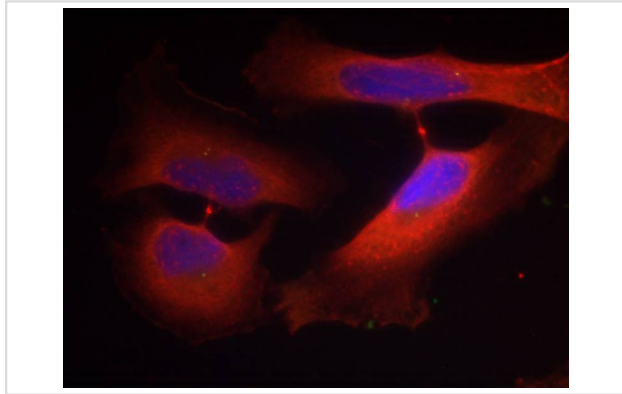
Western blotting: 1:500~1:1000

Immunofluorescence: 1:100~1:200

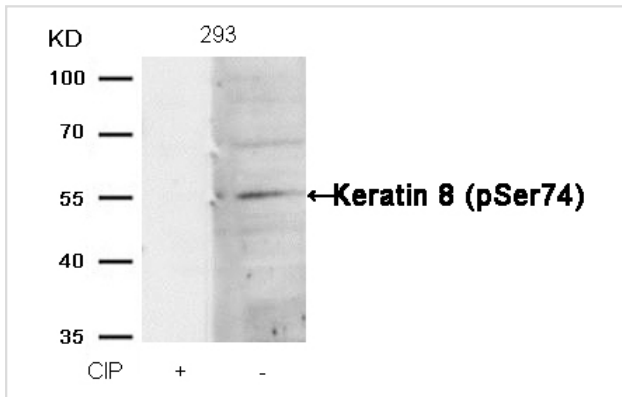
Images



Western blot analysis of extracts from HepG2 cells untreated or treated with EGF using Keratin 8(Phospho-Ser74) Antibody #11307.



Immunofluorescence staining of methanol-fixed HeLa cells using Keratin 8(Phospho-Ser74) Antibody #11307.



Western blot analysis of extracts from 293 cells, treated with calf intestinal phosphatase (CIP), using Keratin 8 (Phospho-Ser74) Antibody #11307.

Background

Keratin 8 is a member of the type II keratin family clustered on the long arm of chromosome 12. Type I and type II keratins heteropolymerize to form intermediate-sized filaments in the cytoplasm of epithelial cells. The product of this gene typically dimerizes with keratin 18 to form an intermediate filament in simple single-layered epithelial cells. This protein plays a role in maintaining cellular structural integrity and also functions in signal transduction and cellular differentiation. Mutations in this gene cause cryptogenic cirrhosis.

Nakamichi I, et al. (2002) *Mol Biol Cell*; 13(10): 3441-3451.

Prochasson P, et al. (2002) *Nucleic Acids Res*; 30(15): 3312-3322.

Pankov R, et al. (1994) *Proc Natl Acad Sci U S A*; 91(3): 873-877.

Thorey IS, et al. (1993) *Mol Cell Biol*; 13(11): 6742-6751

Note: This product is for in vitro research use only