

NFkB-p105(Phospho-Ser927) Antibody

Catalog No: #11312

Package Size: #11312-1 50ul #11312-2 100ul

Orders: order@signalwayantibody.comSupport: tech@signalwayantibody.com

Description

Product Name	NFkB-p105(Phospho-Ser927) Antibody
Host Species	Rabbit
Clonality	Polyclonal
Purification	Antibodies were produced by immunizing rabbits with synthetic phosphopeptide and KLH conjugates. Antibodies were purified by affinity-chromatography using epitope-specific phosphopeptide. Non-phospho specific antibodies were removed by chromatography using non-phosphopeptide.
Applications	WB IHC IF
Species Reactivity	Hu Ms Rt
Specificity	The antibody detects endogenous level of NFkB-p105 only when phosphorylated at serine 927.
Immunogen Type	Peptide-KLH
Immunogen Description	Peptide sequence around phosphorylation site of serine 927 (C-D-S(p)-G-V) derived from Human NFkB-p105.
Target Name	NFkB-p105
Modification	Phospho
Other Names	DNA-binding factor KBF1; EBP-1; NF-kappa-B1 p84/NF-kappa-B1 p98; NFkB1; NFkB-p50
Accession No.	Swiss-Prot: P19838NCBI Protein: NP_001158884.1
Uniprot	P19838
GeneID	4790;
Concentration	1.0mg/ml
Formulation	Supplied at 1.0mg/mL in phosphate buffered saline (without Mg ²⁺ and Ca ²⁺), pH 7.4, 150mM NaCl, 0.02% sodium azide and 50% glycerol.
Storage	Store at -20°C for long term preservation (recommended). Store at 4°C for short term use.

Application Details

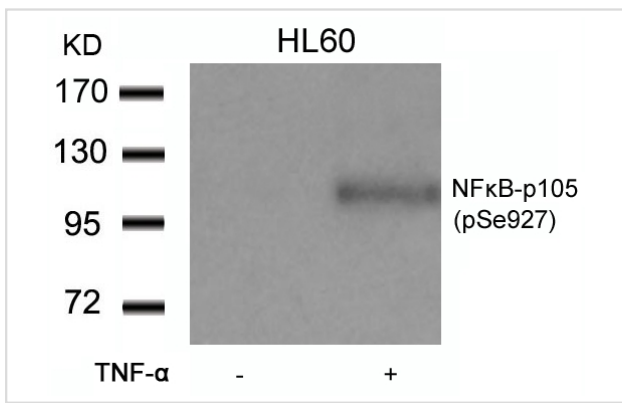
Predicted MW: 120 kd

Western blotting: 1:500~1:1000

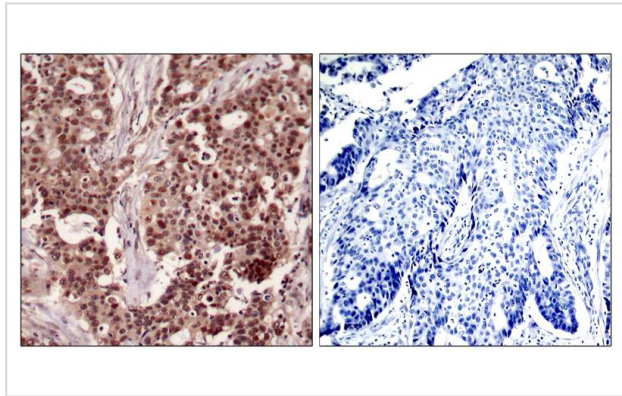
Immunohistochemistry: 1:50~1:100

Immunofluorescence: 1:100~1:200

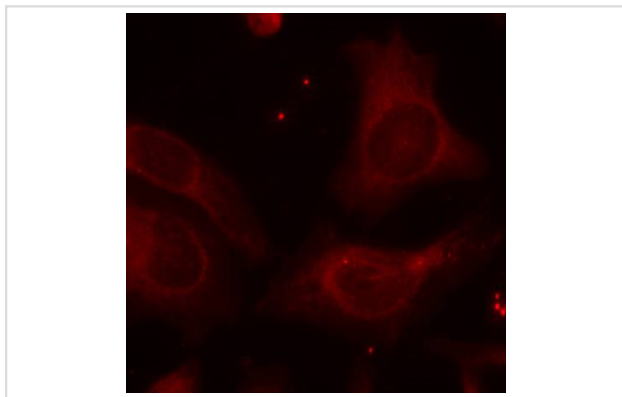
Images



Western blot analysis of extracts from HL60 cells untreated or treated with TNF-α using NFκB-p105(Phospho-Ser927) Antibody #11312.



Immunohistochemical analysis of paraffin-embedded human breast carcinoma tissue using NFκB-p105(Phospho-Ser927) Antibody #11312(left) or the same antibody preincubated with blocking peptide(right).



Immunofluorescence staining of methanol-fixed HeLa cells using NFκB-p105(Phospho-Ser927) Antibody #11312.

Background

NF-kappa-B is a pleiotropic transcription factor which is present in almost all cell types and is involved in many biological processes such as inflammation, immunity, differentiation, cell growth, tumorigenesis and apoptosis. NF-kappa-B is a homo- or heterodimeric complex formed by the Rel-like domain-containing proteins RELA/p65, RELB, NFκB1/p105, NFκB1/p50, REL and NFκB2/p52 and the heterodimeric p65-p50 complex appears to be most abundant one. The dimers bind at kappa-B sites in the DNA of their target genes and the individual dimers have distinct preferences for different kappa-B sites that they can bind with distinguishable affinity and specificity. Different dimer combinations act as transcriptional activators or repressors, respectively.

Hou S, et al. (2003) J Biol Chem. 278(46): 45994-45998.

Baeuerle P A, et al. (1994) Annu Rev Immunol. 12:141-179.

Baeuerle P A, et al. (1996) Cell 87:13-20.

Haskill S, et al. (1991) Cell 65:1281-1289.

Note: This product is for in vitro research use only