

## Smad2(Phospho-Thr220) Antibody

Catalog No: #11323

Package Size: #11323-1 50ul #11323-2 100ul

Orders: order@signalwayantibody.com

Support: tech@signalwayantibody.com

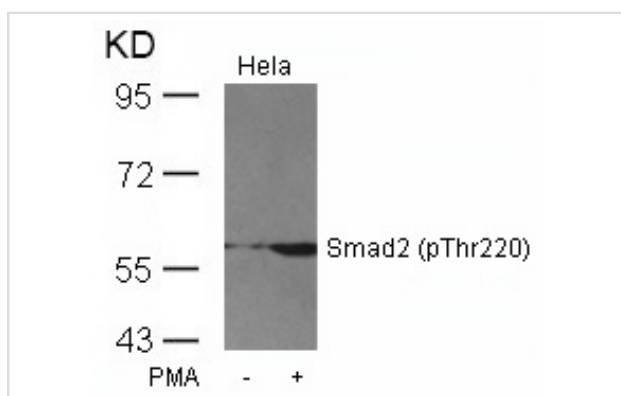
## Description

Product Name	Smad2(Phospho-Thr220) Antibody
Host Species	Rabbit
Clonality	Polyclonal
Purification	Antibodies were produced by immunizing rabbits with synthetic phosphopeptide and KLH conjugates. Antibodies were purified by affinity-chromatography using epitope-specific phosphopeptide. Non-phospho specific antibodies were removed by chromatography using non-phosphopeptide.
Applications	WB, IHC, IF/IC
Species Reactivity	Hu Ms Rt
Specificity	The antibody detects endogenous level of Smad2 only when phosphorylated at threonine 220.
Immunogen Type	Peptide-KLH
Immunogen Description	Peptide sequence around phosphorylation site of threonine 220 (P-E-T(p)-P-P) derived from Human Smad2.
Target Name	Smad2
Modification	Phospho
Other Names	JV18-1; MADH2; MADR2; Mad-related protein 2; Mothers against DPP homolog 2
Accession No.	Swiss-Prot: Q15796NCBI Protein: NP_001003652.1
Uniprot	Q15796
GeneID	4087;
Concentration	1.0mg/ml
Formulation	Liquid in 0.42% Potassium phosphate, 0.87% Sodium chloride, pH 7.3, 30% glycerol, and 0.01% sodium azide.
Storage	Store at -20°C for long term preservation (recommended). Store at 4°C for short term use.

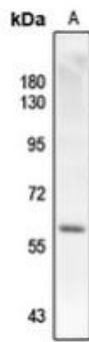
## Application Details

WB 1:500 - 1:1000, IHC 1:50 - 1:200, IF/IC 1:100 - 1:500

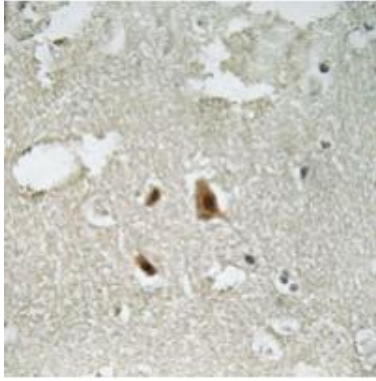
## Images



Western blot analysis of extracts from HeLa cells untreated or treated with PMA using Smad2(Phospho-Thr220) Antibody #11323.



Western blot analysis of SMAD2 (Phospho-T220) expression in rat heart (A) whole cell lysates.



Immunohistochemical analysis of SMAD2 (Phospho-T220) staining in human brain formalin fixed paraffin embedded tissue section.



Immunofluorescent analysis of SMAD2 (Phospho-T220) staining in HeLa cells.

Note: This product is for in vitro research use only