

## SRPX2 Antibody

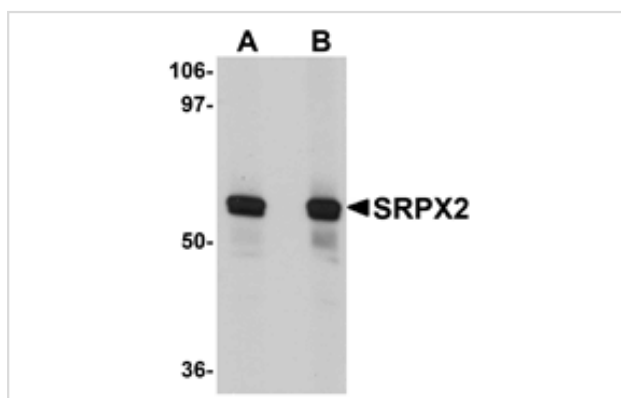
Catalog No: #25000

Orders: [order@signalwayantibody.com](mailto:order@signalwayantibody.com)Support: [tech@signalwayantibody.com](mailto:tech@signalwayantibody.com)

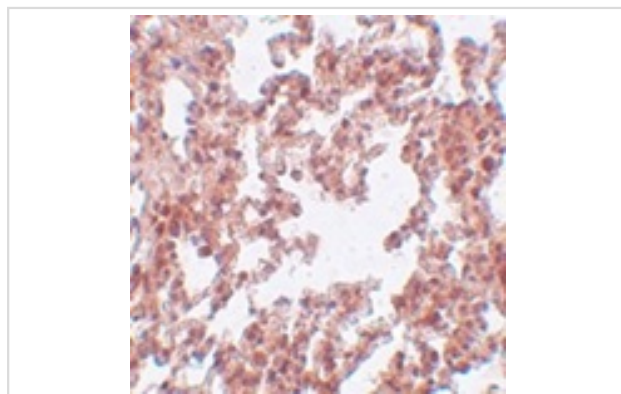
## Description

Product Name	SRPX2 Antibody
Host Species	Rabbit
Clonality	Polyclonal
Purification	Affinity chromatography purified via peptide column
Applications	ELISA WB IHC
Species Reactivity	Hu Ms Rt
Immunogen Type	Peptide
Immunogen Description	Raised against a 16 amino acid peptide from near the amino terminus of human SRPX2.
Target Name	SRPX2
Other Names	Sushi-repeat-containing protein X-linked 2, BPP, CBPS, PMGX, SRPUL
Accession No.	Swiss-Prot:O60687 Gene ID:27286
Uniprot	O60687
GeneID	27286;
Concentration	1mg/ml
Formulation	Supplied in PBS containing 0.02% sodium azide.
Storage	Antibody can be stored at 4°C up to one year. Antibodies should not be exposed to prolonged high temperatures.

## Images



Western blot analysis of SRPX2 in human lung tissue lysate with SRPX2 antibody at (A) 1 and (B) 2 ug/mL.



Immunohistochemistry of SRPX2 in rat lung tissue with SRPX2 antibody at 5 ug/mL.

## Background

---

Sushi-repeat-containing protein X-linked 2 (SRPX2) is a neural gene functioning in the speech and language center of the human brain; mutations in this gene lead to epilepsy, speech dyspraxia, mental retardation and cognitive disorders. Recently, SRPX2 was found to be a novel mediator of angiogenesis and can act as a ligand for the urokinase-type plasminogen activator, a protein that can facilitate invasive migration of sprouting endothelial cells. SRPX2 is also overexpressed in gastric cancer, leading to increased phosphorylation levels of focal adhesion kinase and enhanced cellular migration and adhesion, suggesting that SRPX2 may be a potential target in the treatment of metastatic cancers.

---

Note: This product is for in vitro research use only