

## RHBDD2 Antibody

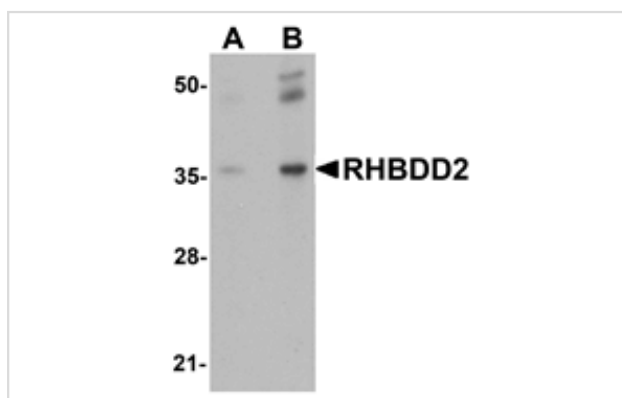
Catalog No: #25021

Orders: [order@signalwayantibody.com](mailto:order@signalwayantibody.com)Support: [tech@signalwayantibody.com](mailto:tech@signalwayantibody.com)

## Description

Product Name	RHBDD2 Antibody
Host Species	Rabbit
Clonality	Polyclonal
Purification	Affinity chromatography purified via peptide column
Applications	ELISA WB
Species Reactivity	Hu Ms Rt
Immunogen Type	Peptide
Immunogen Description	Raised against an 18 amino acid peptide from near the center of human RHBDD2.
Target Name	RHBDD2
Other Names	Rhomboid domain containing 2, RHBDL7, NPD007
Accession No.	Swiss-Prot:Q6NTF9Gene ID:57414
Uniprot	Q6NTF9
GeneID	57414;
Concentration	1mg/ml
Formulation	Supplied in PBS containing 0.02% sodium azide.
Storage	Can be stored at -20°C, stable for one year. As with all antibodies care should be taken to avoid repeated freeze thaw cycles. Antibodies should not be exposed to prolonged high temperatures.

## Images



Western blot analysis of RHBDD2 in rat lung tissue lysate with RHBDD2 antibody at (A) 1 and (B) 2 ug/mL.

## Background

The Rhomboid family of proteins is made up of several widely conserved polytopic membrane serine proteases that play roles in growth and development. Little is known about the role of RHBDD2. Its overexpression in breast carcinoma appears to be an indicator of poor prognosis and may play a role in breast cancer progression. The related proteins RHBDD1 and RHBDD3 are both involved in the regulation of apoptosis, suggesting that RHBDD2 may also be involved in the modulation of apoptotic activity.

---

Note: This product is for in vitro research use only