

Insig1/2(Phospho-Ser207/151) Antibody

Catalog No: #58005

Orders: order@signalwayantibody.com

Support: tech@signalwayantibody.com

Description

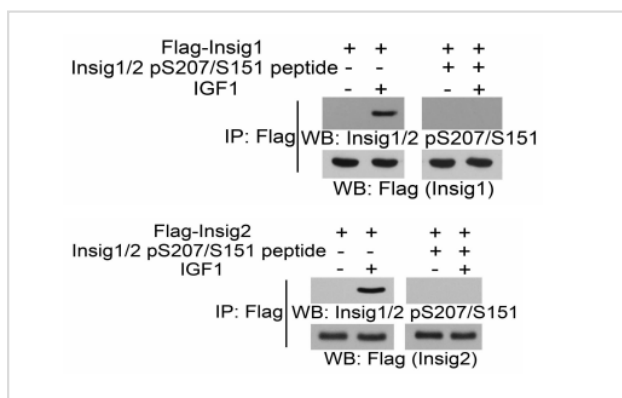
Product Name	Insig1/2(Phospho-Ser207/151) Antibody
Host Species	Rabbit
Clonality	Polyclonal
Purification	The antibody was affinity-purified from rabbit antiserum by affinity-chromatography using epitope-specific phosphopeptide. The antibody against non-phosphopeptide was removed by chromatography using non-phosphopeptide corresponding to the phosphorylation site.
Applications	WB IHC
Species Reactivity	Hu
Specificity	Insig1/2(Phospho-Ser207/151) antibody detects endogenous levels of Insig1/2 only when phosphorylated at serine207/151 .
Immunogen Description	The antiserum was produced against synthesized phosphopeptide derived from Human Insig1/2 around the phosphorylation site of serine 207/151
Accession No.	:NCBI Gene ID: 3638 (Insig1); NCBI Gene ID: 51141 (Insig2)
Uniprot	:NCBI Gene ID: 3638 (Insig1); NCBI Gene ID: 51141 (Insig2)
Calculated MW	Predicted MW: Insig1 pS207: 30~40 KD Insig2 pS151: ~25 KD
Formulation	Rabbit IgG in phosphate buffered saline (without Mg ²⁺ and Ca ²⁺), pH 7.4, 150mM NaCl,0.02% sodium azide and 50% glycerol.
Storage	Store at -20°C/1 year

Application Details

WB dilution: 1:500~1:1000

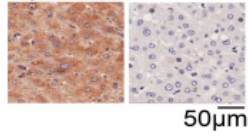
IHC dilution: 1:50-100

Images



Huh7 cells expressing Flag-Insig1 (left panel) or Flag-Insig2 (right panel) were treated with or without IGF1 (100 ng/ml) for 1 h. Immunoprecipitation and immunoblotting analyses were performed with the indicated antibodies in the presence or absence of a blocking peptide for Insig1 pS207 and Insig2 pS151.

Insig1/2 pS207/S151 peptide - +
Insig1/2 pS207/S151 antibody + +



IHC analyses of human HCC samples were performed with the indicated antibodies in the presence or absence of a blocking peptide for Insig1 pS207 and Insig2 pS151.

Note: This product is for in vitro research use only