

ADAMTSL5 Antibody

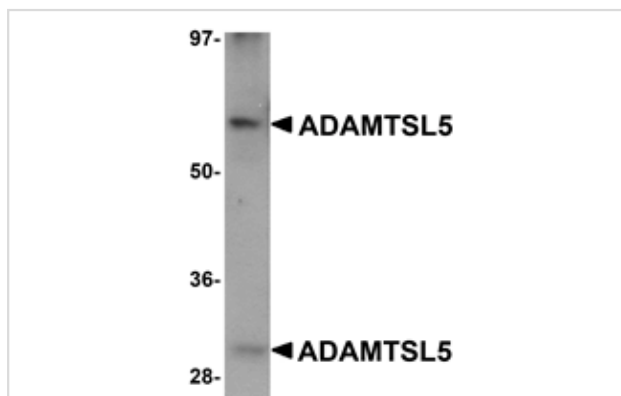
Catalog No: #25092

Orders: order@signalwayantibody.comSupport: tech@signalwayantibody.com

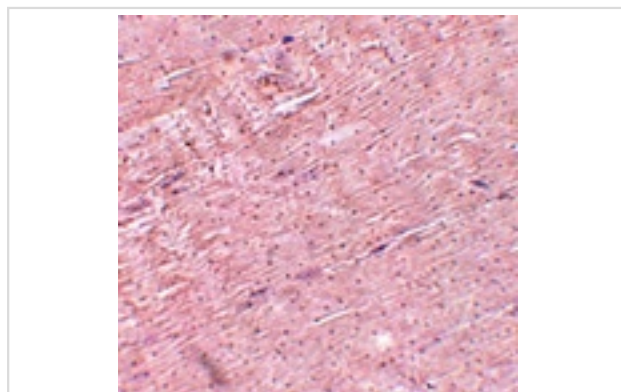
Description

Product Name	ADAMTSL5 Antibody
Host Species	Chicken
Clonality	Polyclonal
Purification	Affinity chromatography purified via peptide column
Applications	ELISA WB IHC
Species Reactivity	Hu Ms Rt
Immunogen Type	Peptide
Immunogen Description	Raised against a 17 amino acid peptide near the carboxy terminus of human ADAMTSL5.
Target Name	ADAMTSL5
Other Names	ADAMTS-like 5, thrombospondin type I domain containing 6, THSD6
Accession No.	Swiss-Prot:Q6ZMM2Gene ID:339366
Uniprot	Q6ZMM2
GeneID	339366;
Concentration	1mg/ml
Formulation	Supplied in PBS containing 0.02% sodium azide.
Storage	Can be stored at -20°C, stable for one year. As with all antibodies care should be taken to avoid repeated freeze thaw cycles. Antibodies should not be exposed to prolonged high temperatures.

Images



Western blot analysis of ADAMTSL5 in human skeletal muscle tissue lysate with ADAMTSL5 antibody at 1 ug/mL.



Immunohistochemistry of ADAMTSL5 in mouse skeletal muscle tissue with ADAMTSL5 antibody at 5 ug/mL.

Background

ADAMTSL5 belongs to a large superfamily containing 20 ADAMTS proteases and at least eight ADAMTS-like proteins. ADAMTS proteases are secreted enzymes with a conserved organization that includes a metalloprotease domain and an ancillary domain containing one or more thrombospondin type 1 repeats (TSR). The ADAMTS-like subfamily comprises proteins homologous to the ADAMTS ancillary domains but lacking the protease domain and hence lacking catalytic activity. The exact role of ADAMTSL5 is currently unknown, but other ADAMTS-like proteins appear to have regulatory roles in the extracellular matrix.

Note: This product is for in vitro research use only