

## MCM6 Rabbit mAb

Catalog No: #52008

Package Size: #52008-1 50ul #52008-2 100ul

Orders: order@signalwayantibody.com

Support: tech@signalwayantibody.com

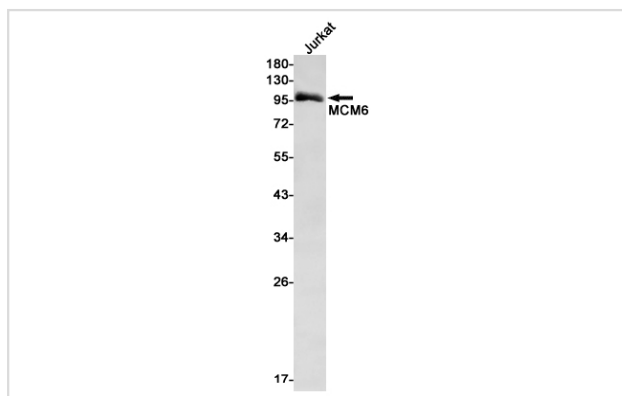
## Description

Product Name	MCM6 Rabbit mAb
Host Species	Recombinant Rabbit
Clonality	Monoclonal antibody
Clone No.	S02-212
Isotype	Rabbit IgG
Purification	Affinity Purified
Applications	WB IHC IF
Species Reactivity	Human,Mouse,Rat
Immunogen Description	Recombinant protein of human MCM6
Conjugates	Unconjugated
Modification	Unmodification
Other Names	minichromosome maintenance complex component 6;Mis5; P105MCM; MCG40308
Accession No.	Swiss-Prot:Q14566GeneID:4175
Uniprot	Q14566
GeneID	4175
Calculated MW	Calculated MW: 93 kDa; Observed MW: 93 kDa
Concentration	0.3 mg/ml
Formulation	50mM Tris-Glycine(pH 7.4), 0.15M NaCl, 40% Glycerol, 0.01% Sodium azide and 0.05% BSA
Storage	Store at 4°C short term. Aliquot and store at -20°C long term. Avoid freeze/thaw cycles.

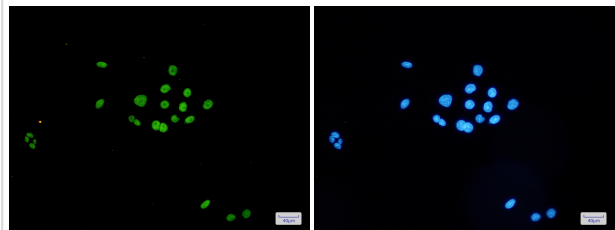
## Application Details

WB: 1/1000; IHC: 1/500; ICC/IF: 1/50;

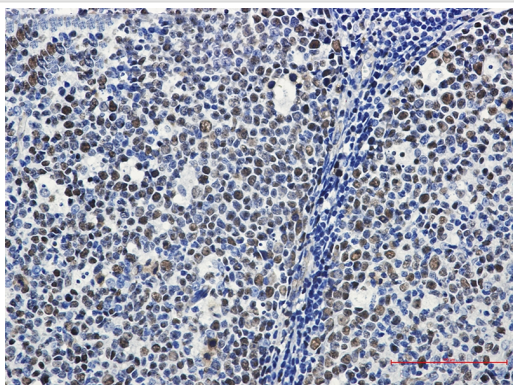
## Images



Western blot detection of MCM6 in Jurkat cell lysates using MCM6 Rabbit mAb(1:1000 diluted).Predicted band size:93kDa.Observed band size:93kDa.



Immunofluorescence of MCM6 (green) in HeLa using MCM6 Rabbit mAb at dilution 1/5, and DAPI(blue)



Immunohistochemistry of MCM6 in paraffin-embedded Human tonsil using MCM6 Rabbit mAb at dilution 1/50

## Background

Swiss-Prot Acc.Q14566.Acts as component of the MCM2-7 complex (MCM complex) which is the putative replicative helicase essential for 'once per cell cycle' DNA replication initiation and elongation in eukaryotic cells. The active ATPase sites in the MCM2-7 ring are formed through the interaction surfaces of two neighboring subunits such that a critical structure of a conserved arginine finger motif is provided in trans relative to the ATP-binding site of the Walker A box of the adjacent subunit. The six ATPase active sites, however, are likely to contribute differentially to the complex helicase activity.

Note: This product is for in vitro research use only