

PD L2 Rabbit mAb

Catalog No: #52013

Package Size: #52013-1 50ul #52013-2 100ul

Orders: order@signalwayantibody.com

Support: tech@signalwayantibody.com

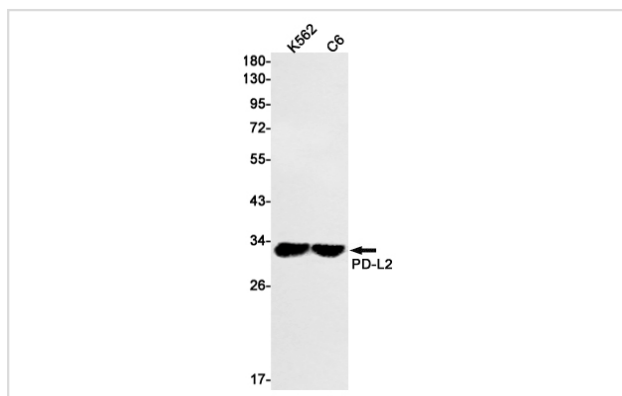
Description

Product Name	PD L2 Rabbit mAb
Host Species	Recombinant Rabbit
Clonality	Monoclonal antibody
Clone No.	S02-2A1
Isotype	Rabbit IgG
Purification	Affinity Purified
Applications	WB
Species Reactivity	Human,Mouse,Rat
Immunogen Description	A synthetic peptide of human PD-L2
Conjugates	Unconjugated
Modification	Unmodification
Other Names	PD-1 ligand 2;PD-L2;PDCD1 ligand 2;B7-DC;CD273
Accession No.	Swiss-Prot:Q9BQ51GeneID:80380
Uniprot	Q9BQ51
GeneID	80380
Calculated MW	Calculated MW: 31 kDa; Observed MW: 31 kDa
Concentration	0.3 mg/ml
Formulation	50mM Tris-Glycine(pH 7.4), 0.15M NaCl, 40% Glycerol, 0.01% Sodium azide and 0.05% BSA
Storage	Store at 4°C short term. Aliquot and store at -20°C long term. Avoid freeze/thaw cycles.

Application Details

WB: 1/1000-1/5000

Images



Western blot detection of PD-L2 in K562,C6 cell lysates using PD-L2 Rabbit mAb(1:1000 diluted).Predicted band size:31kDa.Observed band size:31kDa.

Background

Swiss-Prot Acc.Q9BQ51. Involved in the costimulatory signal, essential for T-cell proliferation and IFNG production in a PDCD1-independent manner. Interaction with PDCD1 inhibits T-cell proliferation by blocking cell cycle progression and cytokine production (By similarity).

Note: This product is for in vitro research use only