

## Angiotensin II Type 1 Receptor Rabbit mAb

Catalog No: #52023

Package Size: #52023-1 50ul #52023-2 100ul

Orders: order@signalwayantibody.com

Support: tech@signalwayantibody.com

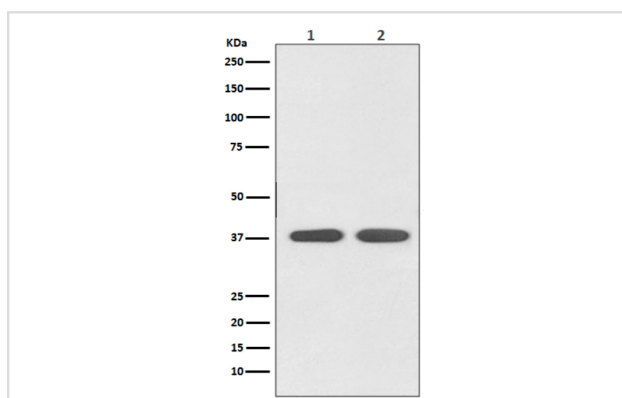
## Description

Product Name	Angiotensin II Type 1 Receptor Rabbit mAb
Clone No.	S07-116
Isotype	Rabbit IgG
Purification	Affinity-chromatography
Applications	WB
Species Reactivity	Human,Mouse,Rat
Immunogen Description	A synthesized peptide derived from human AGTR1
Conjugates	Unconjugated
Modification	Unmodification
Other Names	AT1;AT1AR;AT1BR;Angiotensin II type-1 receptor
Accession No.	Swiss-Prot:P30556GeneID:185
Uniprot	P30556
GeneID	185
Calculated MW	Calculated MW: 41 kDa; Observed MW: 37 kDa
Formulation	Rabbit IgG in 10mM phosphate buffered saline , pH 7.4, 150mM sodium chloride, 0.05% BSA, 0.02% sodium azide and 50% glycerol.
Storage	Store at 4°C short term. Aliquot and store at -20°C long term. Avoid freeze/thaw cycles.

## Application Details

WB 1:1000-1:2000

## Images



Western blot analysis of AGTR1 expression in (1) HeLa cell lysate; (2) 3T3 cell lysate.

## Background

Receptor for angiotensin II. Mediates its action by association with G proteins that activate a phosphatidylinositol-calcium second messenger system. (Microbial infection) During SARS coronavirus-2/SARS-CoV-2 infection, it is able to recognize and internalize the complex formed by secreted ACE2

and SARS-CoV-2 spike protein through DNM2/dynamin 2-dependent endocytosis.

---

Note: This product is for in vitro research use only