

ATP Synthase C Rabbit mAb

Catalog No: #52025

Package Size: #52025-1 50ul #52025-2 100ul

Orders: order@signalwayantibody.comSupport: tech@signalwayantibody.com

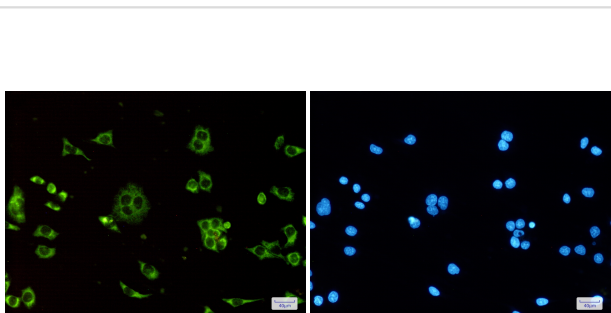
Description

Product Name	ATP Synthase C Rabbit mAb
Clone No.	S02-0D4
Isotype	Rabbit IgG
Purification	Affinity-chromatography
Applications	WB,ICC/IF
Species Reactivity	Human,Mouse,Rat
Immunogen Description	A synthetic peptide of human ATP synthase C
Conjugates	Unconjugated
Modification	Unmodification
Other Names	ATP synthase lipid-binding protein;ATP synthase membrane subunit c locus 1
Accession No.	Swiss-Prot:P05496GeneID:516
Uniprot	P05496
GeneID	516
Calculated MW	8kDa
Concentration	0.8 mg/ml
Formulation	Rabbit IgG in phosphate buffered saline , pH 7.4, 150mM NaCl, 0.02% sodium azide and 50% glycerol.
Storage	Store at 4°C short term. Aliquot and store at -20°C long term. Avoid freeze/thaw cycles.

Application Details

WB 1:500~1:2000 ICC/IF 1:50~1:200

Images



Immunofluorescence of ATP synthase C (green) in HeLa using ATP synthase C Rabbit mAb at dilution 1/50, and DAPI(blue)

Western blot analysis of ATP5G1 expression in HL-60 cell lysate.



Background

Mitochondrial membrane ATP synthase (F1F0 ATP synthase or Complex V) produces ATP from ADP in the presence of a proton gradient across the membrane which is generated by electron transport complexes of the respiratory chain.

Note: This product is for in vitro research use only