

CRABP2 Rabbit mAb

Catalog No: #52030

Package Size: #52030-1 50ul #52030-2 100ul

Orders: order@signalwayantibody.com

Support: tech@signalwayantibody.com

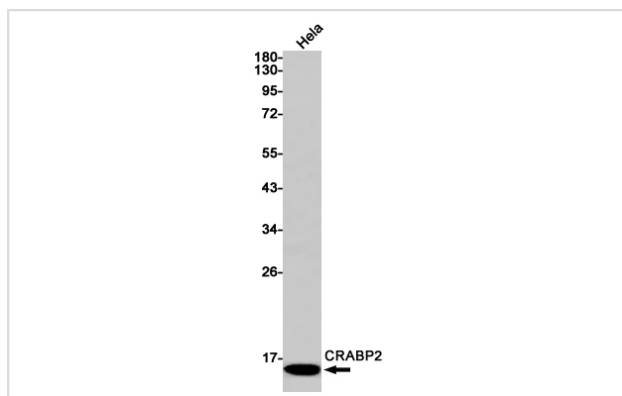
Description

Product Name	CRABP2 Rabbit mAb
Host Species	Recombinant Rabbit
Clonality	Monoclonal antibody
Clone No.	S01-4C4
Isotype	Rabbit IgG
Purification	Affinity Purified
Applications	WB IF
Species Reactivity	Human,Mouse,Rat
Immunogen Description	Recombinant protein of human CRABP2
Conjugates	Unconjugated
Modification	Unmodification
Other Names	Cellular retinoic acid-binding protein II;CRABP-II
Accession No.	Swiss-Prot:P29373GenelD:1382
Uniprot	P29373
GenelD	1382
Calculated MW	Calculated MW: 16 kDa; Observed MW: 14 kDa
Concentration	0.3 mg/ml
Formulation	50mM Tris-Glycine(pH 7.4), 0.15M NaCl, 40% Glycerol, 0.01% Sodium azide and 0.05% BSA
Storage	Store at 4°C short term. Aliquot and store at -20°C long term. Avoid freeze/thaw cycles.

Application Details

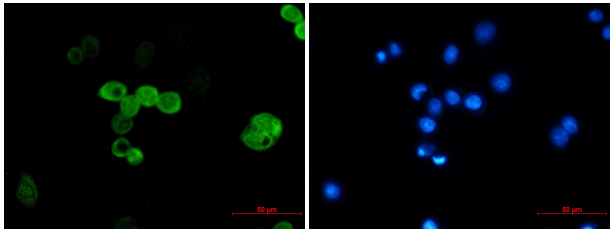
WB: 1/1000; ICC/IF: 1/50;

Images



Western blot detection of CRABP2 in HeLa cell lysates using CRABP2 Rabbit mAb(1:1000 diluted).Predicted band size:16kDa.Observed band size:14kDa.

Immunofluorescence of CRABP2 (green) in MCF-7 using CRABP2 antibody at dilution 1/20, and DAPI(blue)



Background

Transports retinoic acid to the nucleus. Regulates the access of retinoic acid to the nuclear retinoic acid receptors.

Note: This product is for in vitro research use only