

## ENDOGL1 Rabbit mAb

Catalog No: #52038

Package Size: #52038-1 50ul #52038-2 100ul

Orders: order@signalwayantibody.com

Support: tech@signalwayantibody.com

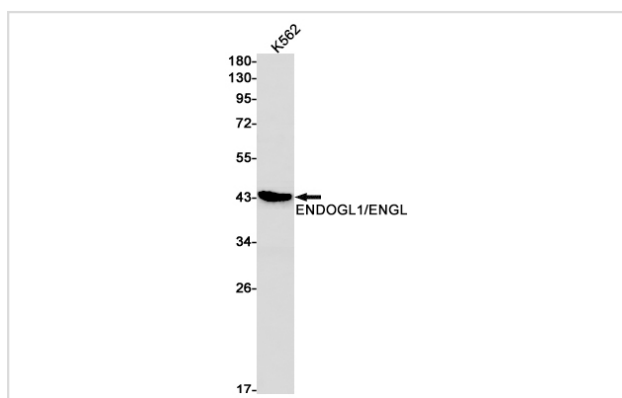
## Description

Product Name	ENDOGL1 Rabbit mAb
Host Species	Recombinant Rabbit
Clonality	Monoclonal antibody
Clone No.	S04-9F5
Isotype	Rabbit IgG
Purification	Affinity Purified
Applications	WB
Species Reactivity	Human
Immunogen Description	A synthetic peptide of human ENDOGL1
Conjugates	Unconjugated
Modification	Unmodification
Other Names	exo/endonuclease G;ENGL; ENGLA; ENGLB; ENGL-a; ENGL-b; ENDOGL1; ENDOGL2
Accession No.	Swiss-Prot:Q9Y2C4GeneID:9941
Uniprot	Q9Y2C4
GeneID	9941
Calculated MW	Calculated MW: 41 kDa; Observed MW: 41 kDa
Concentration	0.3 mg/ml
Formulation	50mM Tris-Glycine(pH 7.4), 0.15M NaCl, 40% Glycerol, 0.01% Sodium azide and 0.05% BSA
Storage	Store at 4°C short term. Aliquot and store at -20°C long term. Avoid freeze/thaw cycles.

## Application Details

WB: 1/1000

## Images



Western blot detection of ENDOGL1/ENGL in K562 cell lysates using ENDOGL1/ENGL Rabbit mAb(1:1000 diluted).Predicted band size:41kDa.Observed band size:41kDa.

## Background

---

Endo/exonuclease with nicking activity towards supercoiled DNA, a preference for single-stranded DNA and 5'-3' exonuclease activity.

---

Note: This product is for in vitro research use only