

Hsp90 alpha Rabbit mAb

Catalog No: #52039

Package Size: #52039-1 50ul #52039-2 100ul

Orders: order@signalwayantibody.com

Support: tech@signalwayantibody.com

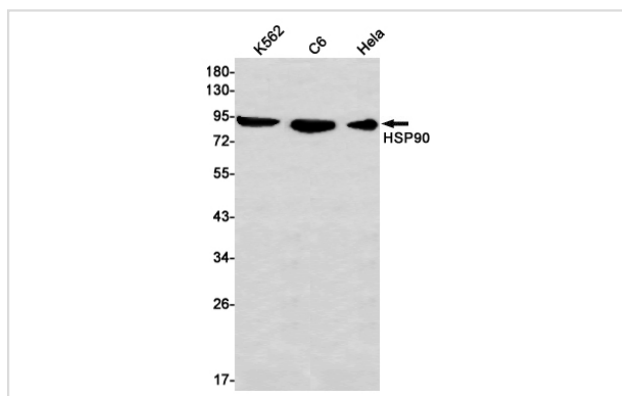
Description

Product Name	Hsp90 alpha Rabbit mAb
Host Species	Recombinant Rabbit
Clonality	Monoclonal antibody
Clone No.	S06-9C1
Isotype	Rabbit IgG
Purification	Affinity Purified
Applications	WB
Species Reactivity	Human,Mouse,Rat
Immunogen Description	A synthetic peptide of human Hsp90 alpha
Conjugates	Unconjugated
Modification	Unmodification
Other Names	EL52; HSPN; LAP2; HSP86; HSPC1; HSPCA; Hsp89; Hsp90; LAP-2; HSP89A; HSP90A; HSP90N; HSPCAL1; HSPCAL4
Accession No.	Swiss-Prot:P07900GeneID:3320
Uniprot	P07900
GeneID	3320
Calculated MW	Calculated MW: 85 kDa; Observed MW: 90 kDa
Concentration	0.3 mg/ml
Formulation	50mM Tris-Glycine(pH 7.4), 0.15M NaCl, 40% Glycerol, 0.01% Sodium azide and 0.05% BSA
Storage	Store at 4°C short term. Aliquot and store at -20°C long term. Avoid freeze/thaw cycles.

Application Details

WB: 1/1000

Images



Western blot detection of HSP90 in K562,C6,HeLa cell lysates using Hsp90 alpha Rabbit mAb(1:1000 diluted).Predicted band size:85kDa.Observed band size:90kDa.

Background

Swiss-Prot Acc.P07900.Molecular chaperone that promotes the maturation, structural maintenance and proper regulation of specific target proteins involved for instance in cell cycle control and signal transduction. Undergoes a functional cycle that is linked to its ATPase activity which is essential for its chaperone activity. This cycle probably induces conformational changes in the client proteins, thereby causing their activation. Interacts dynamically with various co-chaperones that modulate its substrate recognition, ATPase cycle and chaperone function (PubMed:11274138, PubMed:15577939, PubMed:15937123, PubMed:27353360, PubMed:29127155, PubMed:12526792).

Note: This product is for in vitro research use only