

Fructose 6 Phosphate Kinase Rabbit mAb

Catalog No: #52045

Package Size: #52045-1 50ul #52045-2 100ul

Orders: order@signalwayantibody.com

Support: tech@signalwayantibody.com

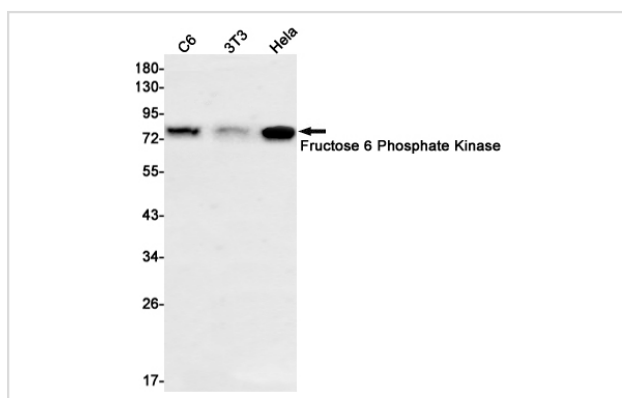
Description

Product Name	Fructose 6 Phosphate Kinase Rabbit mAb
Host Species	Recombinant Rabbit
Clonality	Monoclonal antibody
Clone No.	S08-6B4
Isotype	Rabbit IgG
Purification	Affinity Purified
Applications	WB IF
Species Reactivity	Human,Mouse,Rat
Immunogen Description	A synthetic peptide of human Fructose 6 Phosphate Kinase
Conjugates	Unconjugated
Modification	Unmodification
Other Names	GSD7; PFK1; PFKA; PFKX; PFK-1; Phosphohexokinase;
Accession No.	Swiss-Prot:P08237GenelD:5213
Uniprot	P08237
GenelD	5213
Calculated MW	Calculated MW: 85 kDa; Observed MW: 85 kDa
Concentration	0.3 mg/ml
Formulation	50mM Tris-Glycine(pH 7.4), 0.15M NaCl, 40% Glycerol, 0.01% Sodium azide and 0.05% BSA
Storage	Store at 4°C short term. Aliquot and store at -20°C long term. Avoid freeze/thaw cycles.

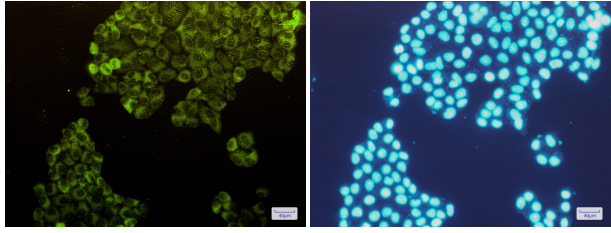
Application Details

WB: 1/1000-1/5000; ICC/IF: 1/20-1/50;

Images



Western blot detection of Fructose 6 Phosphate Kinase in C6,3T3,HeLa cell lysates using Fructose 6 Phosphate Kinase Rabbit mAb(1:1000 diluted).Predicted band size:85kDa.Observed band size:85kDa.



Immunofluorescence of Fructose 6 Phosphate Kinase(green) in HeLa cells using Fructose 6 Phosphate Kinase Rabbit mAb at dilution 1/200, and DAPI(blue)

Background

Swiss-Prot Acc.P08237. Catalyzes the phosphorylation of D-fructose 6-phosphate to fructose 1,6-bisphosphate by ATP, the first committing step of glycolysis.

Note: This product is for in vitro research use only