

ATM Rabbit mAb

Catalog No: #52054

Package Size: #52054-1 50ul #52054-2 100ul

Orders: order@signalwayantibody.com

Support: tech@signalwayantibody.com

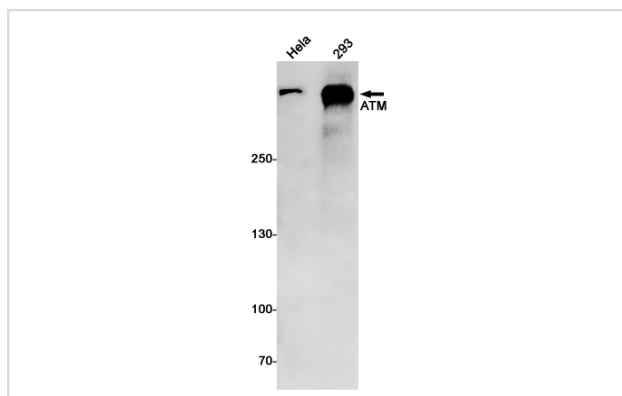
Description

Product Name	ATM Rabbit mAb
Host Species	Recombinant Rabbit
Clonality	Monoclonal antibody
Clone No.	S08-8H3
Isotype	Rabbit IgG
Purification	Affinity Purified
Applications	WB
Species Reactivity	Human
Immunogen Description	A synthetic peptide of human ATM
Conjugates	Unconjugated
Modification	Unmodification
Other Names	AT1,ATA,ATDC,TEL1,A-T mutated
Accession No.	Swiss-Prot:Q13315GeneID:472
Uniprot	Q13315
GeneID	472
Calculated MW	Calculated MW: 351 kDa; Observed MW: 351 kDa
Concentration	0.3 mg/ml
Formulation	50mM Tris-Glycine(pH 7.4), 0.15M NaCl, 40% Glycerol, 0.01% Sodium azide and 0.05% BSA
Storage	Store at 4°C short term. Aliquot and store at -20°C long term. Avoid freeze/thaw cycles.

Application Details

WB: 1/2000;

Images



Western blot detection of ATM in HeLa,293 cell lysates using ATM Rabbit mAb(1:1000 diluted).Predicted band size:351kDa.Observed band size:351kDa.

Background

Swiss-Prot Acc.Q13315.Serine/threonine protein kinase which activates checkpoint signaling upon double strand breaks (DSBs), apoptosis and genotoxic stresses such as ionizing ultraviolet A light (UVA), thereby acting as a DNA damage sensor. Recognizes the substrate consensus sequence [ST]-Q. Phosphorylates 'Ser-139' of histone variant H2AX at double strand breaks (DSBs), thereby regulating DNA damage response mechanism. Also plays a role in pre-B cell allelic exclusion, a process leading to expression of a single immunoglobulin heavy chain allele to enforce clonality and monospecific recognition by the B-cell antigen receptor (BCR) expressed on individual B-lymphocytes. After the introduction of DNA breaks by the RAG complex on one immunoglobulin allele, acts by mediating a repositioning of the second allele to pericentromeric heterochromatin, preventing accessibility to the RAG complex and recombination of the second allele.

Note: This product is for in vitro research use only