

CD31 Rabbit mAb

Catalog No: #52064

Package Size: #52064-1 50ul #52064-2 100ul

Orders: order@signalwayantibody.com

Support: tech@signalwayantibody.com

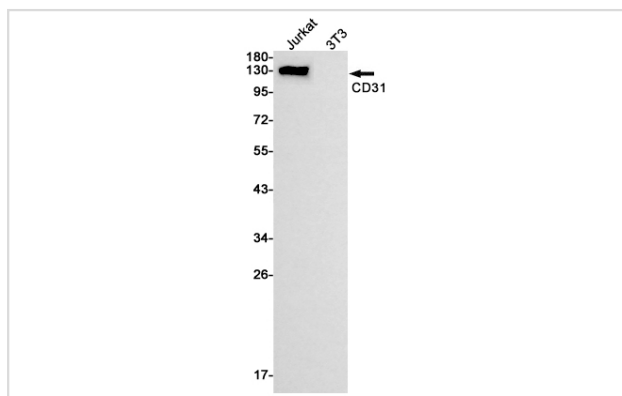
Description

Product Name	CD31 Rabbit mAb
Host Species	Recombinant Rabbit
Clonality	Monoclonal antibody
Clone No.	S04-2F3
Isotype	Rabbit IgG
Purification	Affinity Purified
Applications	WB
Species Reactivity	Human
Immunogen Description	A synthetic peptide of human CD31
Conjugates	Unconjugated
Modification	Unmodification
Other Names	CD31; PECA1; GPIIA'; PECAM-1; endoCAM; CD31/EndoCAM
Accession No.	Swiss-Prot:P16284GenelD:5175
Uniprot	P16284
GenelD	5175
Calculated MW	Calculated MW: 83 kDa; Observed MW: 130 kDa
Concentration	0.3 mg/ml
Formulation	50mM Tris-Glycine(pH 7.4), 0.15M NaCl, 40% Glycerol, 0.01% Sodium azide and 0.05% BSA
Storage	Store at 4°C short term. Aliquot and store at -20°C long term. Avoid freeze/thaw cycles.

Application Details

WB: 1/1000;

Images



Western blot detection of CD31 in Jurkat,3T3 cell lysates using CD31 Rabbit mAb(1:1000 diluted).Predicted band size:83kDa.Observed band size:130kDa.

Background

Cell adhesion molecule which is required for leukocyte transendothelial migration (TEM) under most inflammatory conditions .

Tyr-690 plays a critical role in TEM and is required for efficient trafficking of PECAM1 to and from the lateral border recycling compartment (LBRC) and is also essential for the LBRC membrane to be targeted around migrating leukocytes .

Note: This product is for in vitro research use only