

## Glutamine Synthetase Rabbit mAb

Catalog No: #52068

Package Size: #52068-1 50ul #52068-2 100ul

Orders: order@signalwayantibody.com

Support: tech@signalwayantibody.com

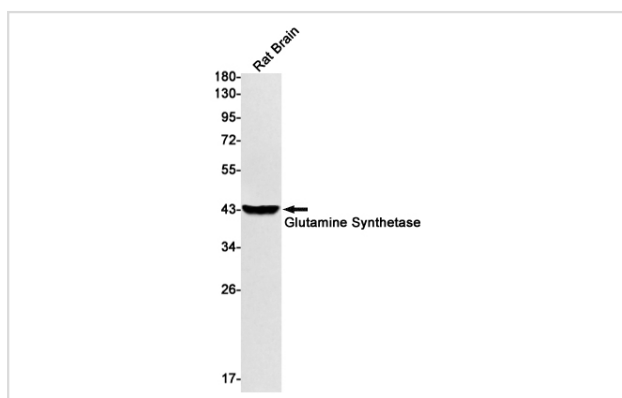
## Description

Product Name	Glutamine Synthetase Rabbit mAb
Host Species	Recombinant Rabbit
Clonality	Monoclonal antibody
Clone No.	S03-4B6
Isotype	Rabbit IgG
Purification	Affinity Purified
Applications	WB
Species Reactivity	Human,Mouse,Rat
Immunogen Description	A synthetic peptide of human Glutamine Synthetase
Conjugates	Unconjugated
Modification	Unmodification
Other Names	GLNA; GS; GLUL; GLNS; PIG43 ; PIG59; Glutamine synthetase;
Accession No.	Swiss-Prot:P15104GenelD:2752
Uniprot	P15104
GenelD	2752
Calculated MW	Calculated MW: 42 kDa; Observed MW: 42 kDa
Concentration	0.3 mg/ml
Formulation	50mM Tris-Glycine(pH 7.4), 0.15M NaCl, 40% Glycerol, 0.01% Sodium azide and 0.05% BSA
Storage	Store at 4°C short term. Aliquot and store at -20°C long term. Avoid freeze/thaw cycles.

## Application Details

WB: 1/1000

## Images



Western blot detection of Glutamine Synthetase in Rat Brain lysates using Glutamine Synthetase Rabbit mAb(1:1000 diluted). Predicted band size:42kDa. Observed band size:42kDa.

## Background

---

Glutamine synthetase that catalyzes the ATP-dependent conversion of glutamate and ammonia to glutamine

Its role depends on tissue localization: in the brain, it regulates the levels of toxic ammonia and converts neurotoxic glutamate to harmless glutamine, whereas in the liver, it is one of the enzymes responsible for the removal of ammonia (By similarity).

---

Note: This product is for in vitro research use only