

## Glypican 1 Rabbit mAb

Catalog No: #52077

Package Size: #52077-1 50ul #52077-2 100ul

Orders: order@signalwayantibody.com

Support: tech@signalwayantibody.com

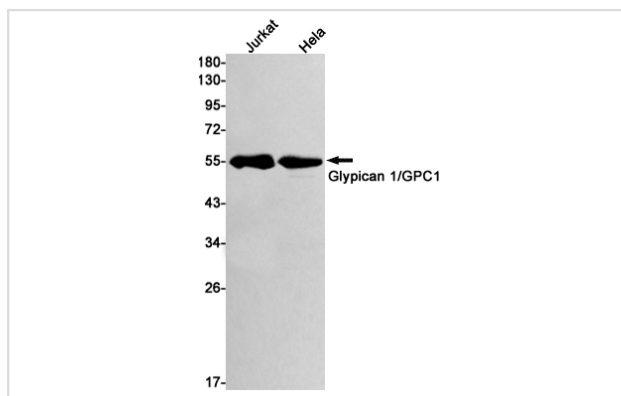
## Description

Product Name	Glypican 1 Rabbit mAb
Host Species	Recombinant Rabbit
Clonality	Monoclonal antibody
Clone No.	S03-2E8
Isotype	Rabbit IgG
Purification	Affinity Purified
Applications	WB IF
Species Reactivity	Human
Immunogen Description	A synthetic peptide of human Glypican 1/GPC1
Conjugates	Unconjugated
Modification	Unmodification
Other Names	glypican
Accession No.	Swiss-Prot:P35052GenelD:2817
Uniprot	P35052
GenelD	2817
Calculated MW	Calculated MW: 62 kDa; Observed MW: 55 kDa
Concentration	0.3 mg/ml
Formulation	50mM Tris-Glycine(pH 7.4), 0.15M NaCl, 40% Glycerol, 0.01% Sodium azide and 0.05% BSA
Storage	Store at 4°C short term. Aliquot and store at -20°C long term. Avoid freeze/thaw cycles.

## Application Details

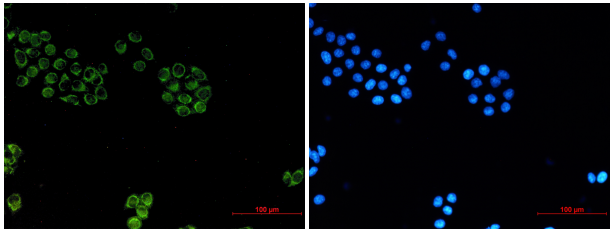
WB: 1/1000; ICC/IF: 1/100;

## Images



Western blot detection of Glypican 1/GPC1 in Jurkat, HeLa cell lysates using Glypican 1/GPC1 Rabbit mAb(1:1000 diluted). Predicted band size: 62kDa. Observed band size: 55kDa.

Immunofluorescence of Glypican 1/GPC1 (green) in HeLa using Glypican 1/GPC1 antibody at dilution 1/20, and DAPI(blue)



## Background

Cell surface proteoglycan that bears heparan sulfate. Binds, via the heparan sulfate side chains, alpha-4 (V) collagen and participates in Schwann cell myelination (By similarity).

May act as a catalyst in increasing the rate of conversion of prion protein PRPN(C) to PRNP(Sc) via associating (via the heparan sulfate side chains) with both forms of PRPN, targeting them to lipid rafts and facilitating their interaction. Required for proper skeletal muscle differentiation by sequestering FGF2 in lipid rafts preventing its binding to receptors (FGFRs) and inhibiting the FGF-mediated signaling.

Note: This product is for in vitro research use only