

PLGF Rabbit mAb

Catalog No: #52078

Package Size: #52078-1 50ul #52078-2 100ul

Orders: order@signalwayantibody.com

Support: tech@signalwayantibody.com

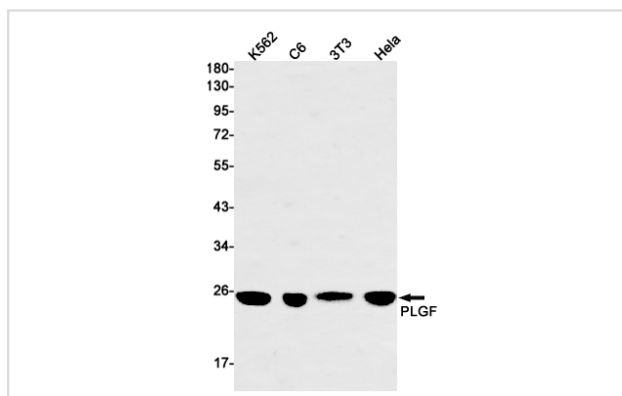
Description

Product Name	PLGF Rabbit mAb
Host Species	Recombinant Rabbit
Clonality	Monoclonal antibody
Clone No.	S08-9C2
Isotype	Rabbit IgG
Purification	Affinity Purified
Applications	WB
Species Reactivity	Human, Mouse, Rat
Immunogen Description	A synthetic peptide of human PLGF
Conjugates	Unconjugated
Modification	Unmodification
Other Names	Pgf; PGFL; PIGF; Placenta growth factor; Placental growth factor, vascular endothelial growth factor related protein; PIGF; PIGF2; SHGC 10760;
Accession No.	Swiss-Prot:P49763GenID:5228
Uniprot	P49763
GeneID	5228
Calculated MW	Calculated MW: 25 kDa; Observed MW: 25 kDa
Concentration	0.3 mg/ml
Formulation	50mM Tris-Glycine(pH 7.4), 0.15M NaCl, 40% Glycerol, 0.01% Sodium azide and 0.05% BSA
Storage	Store at 4°C short term. Aliquot and store at -20°C long term. Avoid freeze/thaw cycles.

Application Details

WB: 1/2000

Images



Western blot detection of PLGF in K562, C6, 3T3, HeLa cell lysates using PLGF Rabbit mAb (1:1000 diluted). Predicted band size: 25 kDa. Observed band size: 25 kDa.

Background

Growth factor active in angiogenesis and endothelial cell growth, stimulating their proliferation and migration. It binds to the receptor FLT1/VEGFR-1. Isoform PIGF-2 binds NRP1/neuropilin-1 and NRP2/neuropilin-2 in a heparin-dependent manner. Also promotes cell tumor growth.

Note: This product is for in vitro research use only