

## CD146 Rabbit mAb

Catalog No: #52081

Package Size: #52081-1 50ul #52081-2 100ul

Orders: order@signalwayantibody.com

Support: tech@signalwayantibody.com

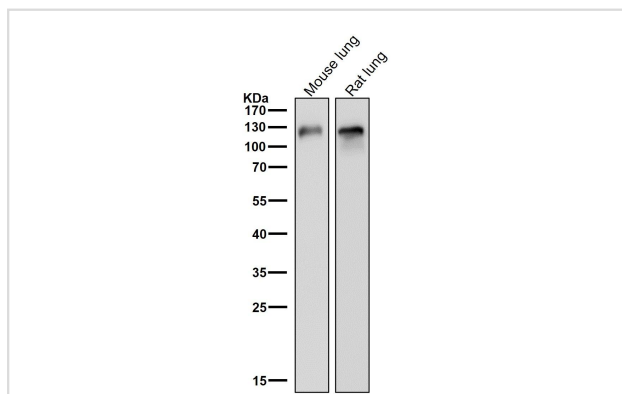
## Description

Product Name	CD146 Rabbit mAb
Clone No.	S05-5A2
Isotype	Rabbit IgG
Purification	Affinity Purified
Applications	WB,IHC,ICC/IF,IP,FC
Species Reactivity	Human,Mouse,Rat
Immunogen Description	A synthetic peptide of human CD146
Conjugates	Unconjugated
Modification	Unmodification
Other Names	A32 antigen; CD 146; CD146; CD146 antigen; Cell surface glycoprotein P1H12; Gicerin; MCAM; Melanoma adhesion molecule; Melanoma associated antigen A32;
Accession No.	Swiss-Prot:P43121GenelD:4162
Uniprot	P43121
GeneID	4162
Calculated MW	72kDa
Concentration	0.3 mg/ml
Formulation	Rabbit IgG in phosphate buffered saline , pH 7.4, 150mM NaCl, 0.02% sodium azide and 50% glycerol.
Storage	Store at 4°C short term. Aliquot and store at -20°C long term. Avoid freeze/thaw cycles.

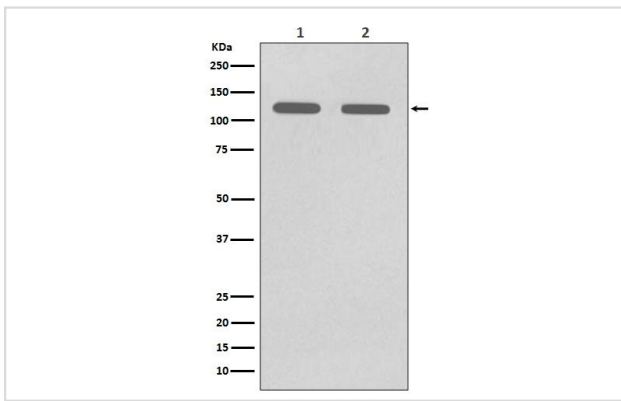
## Application Details

WB 1:500-1:2000 IHC 1:50-1:200 ICC/IF 1:50-1:200 IP 1:50 FC 1:50

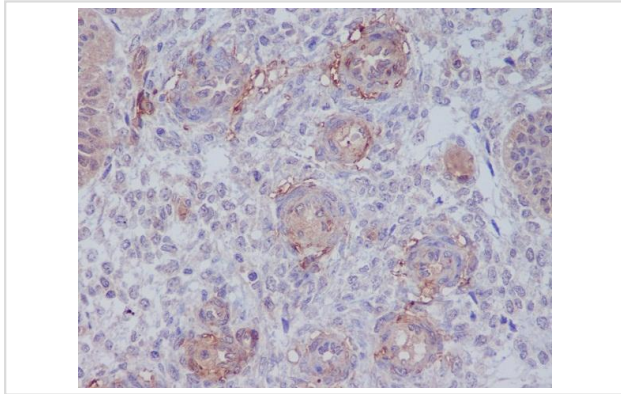
## Images



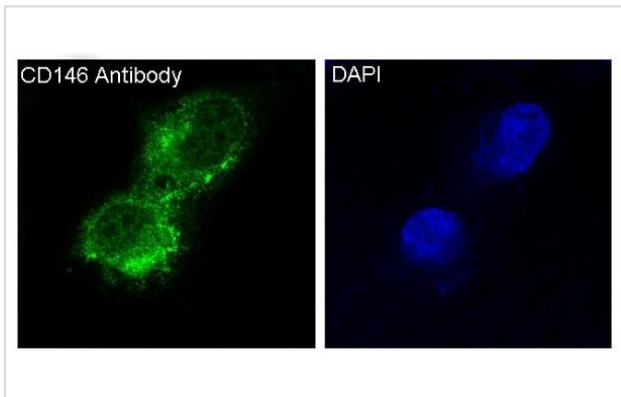
All lanes use the Antibody at 1:5K dilution for 1 hour at room temperature.



Western blot analysis of CD146 expression in (1) A375 cell lysate;(2) HUVEC cell lysate



Immunohistochemical analysis of paraffin-embedded human uterus, using CD146 Antibody.



Immunofluorescent analysis of A375 cells, using CD146 Antibody.

## Background

CD146 plays a role in cell adhesion, and in cohesion of the endothelial monolayer at intercellular junctions in vascular tissue. Its expression may allow melanoma cells to interact with cellular elements of the vascular system, thereby enhancing hematogeneous tumor spread. Could be an adhesion molecule active in neural crest cells during embryonic development.

Note: This product is for in vitro research use only