

## IKK alpha Rabbit mAb

Catalog No: #52086

Package Size: #52086-1 50ul #52086-2 100ul

Orders: order@signalwayantibody.com

Support: tech@signalwayantibody.com

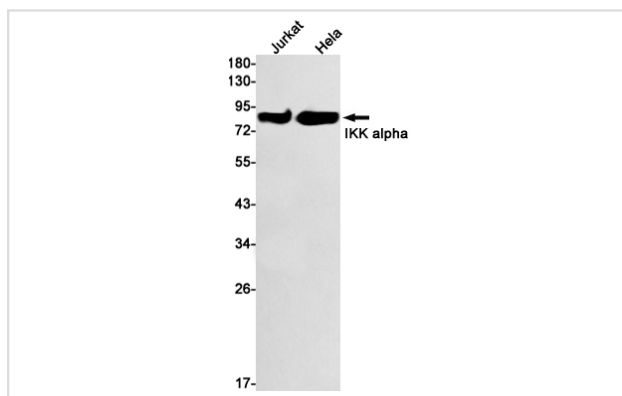
## Description

Product Name	IKK alpha Rabbit mAb
Host Species	Recombinant Rabbit
Clonality	Monoclonal antibody
Clone No.	S03-1E7
Isotype	Rabbit IgG
Purification	Affinity Purified
Applications	WB
Species Reactivity	Human
Immunogen Description	A synthetic peptide of human IKK alpha
Conjugates	Unconjugated
Modification	Unmodification
Other Names	CHUK; I-kappa-B kinase 1; I-kappa-B kinase alpha; I-kappa-B kinase-alpha; IkappaB kinase; IκB kinase alpha subunit; IκBKA; IKK-A; IKK-a kinase; IKK-alpha; IKK1; IKKA;
Accession No.	Swiss-Prot:O15111GeneID:1147
Uniprot	O15111
GeneID	1147
Calculated MW	Calculated MW: 85 kDa; Observed MW: 85 kDa
Concentration	0.3 mg/ml
Formulation	50mM Tris-Glycine(pH 7.4), 0.15M NaCl, 40% Glycerol, 0.01% Sodium azide and 0.05% BSA
Storage	Store at 4°C short term. Aliquot and store at -20°C long term. Avoid freeze/thaw cycles.

## Application Details

WB: 1/2000;

## Images



Western blot detection of IKK alpha in Jurkat, HeLa cell lysates using IKK alpha Rabbit mAb (1:1000 diluted). Predicted band size: 85 kDa. Observed band size: 85 kDa.

## Background

---

Swiss-Prot Acc.O15111.Serine kinase that plays an essential role in the NF-kappa-B signaling pathway which is activated by multiple stimuli such as inflammatory cytokines, bacterial or viral products, DNA damages or other cellular stresses (PubMed:9244310, PubMed:9252186, PubMed:9346484, PubMed:18626576).

Acts as part of the canonical IKK complex in the conventional pathway of NF-kappa-B activation and phosphorylates inhibitors of NF-kappa-B on serine residues (PubMed:9244310, PubMed:9252186, PubMed:9346484, PubMed:18626576).

These modifications allow polyubiquitination of the inhibitors and subsequent degradation by the proteasome (PubMed:9244310, PubMed:9252186, PubMed:9346484, PubMed:18626576).

---

Note: This product is for in vitro research use only