

Phospho-BRAF (Thr401) Rabbit mAb

Catalog No: #52097

Package Size: #52097-1 50ul #52097-2 100ul

Orders: order@signalwayantibody.com

Support: tech@signalwayantibody.com

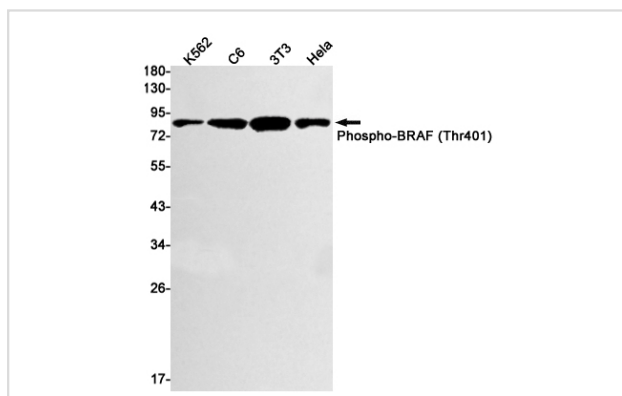
Description

Product Name	Phospho-BRAF (Thr401) Rabbit mAb
Host Species	Recombinant Rabbit
Clonality	Monoclonal antibody
Clone No.	S05-9B6
Isotype	Rabbit IgG
Purification	Affinity Purified
Applications	WB
Species Reactivity	Human,Mouse,Rat
Immunogen Description	A synthetic phosphopeptide corresponding to residues surrounding Thr401 of human B Raf
Conjugates	Unconjugated
Modification	Phosphorylated
Other Names	B-RAF; B-RAF proto-oncogene serine/threonine-protein kinase; BRAF1; RAFB1; RMIL; RMIL serine/threonine-protein kinase; c-RMIL; kinase B-Raf;
Accession No.	Swiss-Prot:P15056GenID:673
Uniprot	P15056
GenID	673
Calculated MW	Calculated MW: 84 kDa; Observed MW: 84 kDa
Concentration	0.3 mg/ml
Formulation	50mM Tris-Glycine(pH 7.4), 0.15M NaCl, 40% Glycerol, 0.01% Sodium azide and 0.05% BSA
Storage	Store at 4°C short term. Aliquot and store at -20°C long term. Avoid freeze/thaw cycles.

Application Details

WB: 1/1000;

Images



Western blot detection of Phospho-BRAF (Thr401) in K562,C6,3T3,HeLa cell lysates using Phospho-BRAF (Thr401) Rabbit mAb(1:1000 diluted).Predicted band size:84kDa.Observed band size:84kDa.

Background

Protein kinase involved in the transduction of mitogenic signals from the cell membrane to the nucleus (Probable). Phosphorylates MAP2K1, and thereby activates the MAP kinase signal transduction pathway.

May play a role in the postsynaptic responses of hippocampal neurons

Note: This product is for in vitro research use only