

14 3 3 theta Rabbit mAb

Catalog No: #52112

Package Size: #52112-1 50ul #52112-2 100ul

Orders: order@signalwayantibody.com

Support: tech@signalwayantibody.com

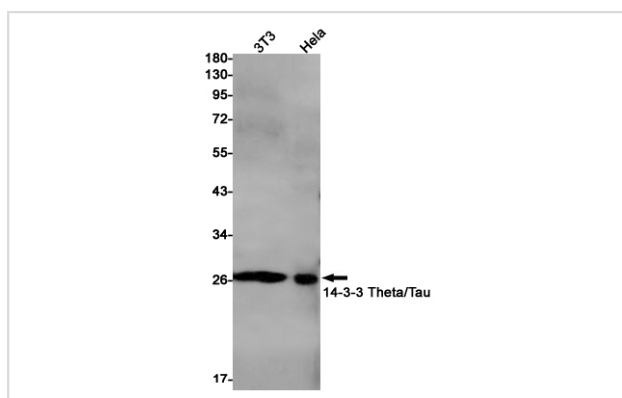
Description

Product Name	14 3 3 theta Rabbit mAb
Host Species	Recombinant Rabbit
Clonality	Monoclonal antibody
Clone No.	S07-8G4
Isotype	Rabbit IgG
Purification	Affinity Purified
Applications	WB
Species Reactivity	Human,Mouse,Rat
Immunogen Description	A synthetic peptide of human 14-3-3 Theta/Tau
Conjugates	Unconjugated
Modification	Unmodification
Other Names	1C5; HS1; 14-3-3
Accession No.	Swiss-Prot:P27348GenelD:10971
Uniprot	P27348
GenelD	10971
Calculated MW	Calculated MW: 28 kDa; Observed MW: 28 kDa
Concentration	0.3 mg/ml
Formulation	50mM Tris-Glycine(pH 7.4), 0.15M NaCl, 40% Glycerol, 0.01% Sodium azide and 0.05% BSA
Storage	Store at 4°C short term. Aliquot and store at -20°C long term. Avoid freeze/thaw cycles.

Application Details

WB: 1/2000-1/10000;

Images



Western blot detection of 14-3-3 Theta/Tau in 3T3,HeLa cell lysates using 14-3-3 Theta/Tau Rabbit mAb(1:1000 diluted).Predicted band size:28kDa.Observed band size:28kDa.

Background

Swiss-Prot Acc.P27348.Adapter protein implicated in the regulation of a large spectrum of both general and specialized signaling pathways. Binds to a large number of partners, usually by recognition of a phosphoserine or phosphothreonine motif. Binding generally results in the modulation of the activity of the binding partner. Negatively regulates the kinase activity of PDPK1.

Note: This product is for in vitro research use only