

## Activin A Receptor Type IB Rabbit mAb

Catalog No: #52122

Package Size: #52122-1 50ul #52122-2 100ul

Orders: order@signalwayantibody.com

Support: tech@signalwayantibody.com

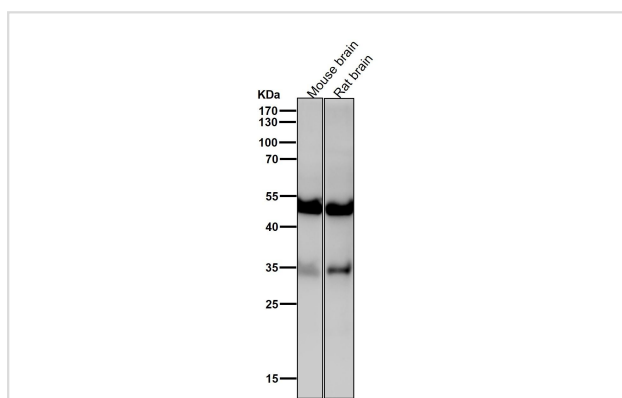
## Description

Product Name	Activin A Receptor Type IB Rabbit mAb
Clone No.	S08-8D6
Isotype	Rabbit IgG
Purification	Affinity-chromatography
Applications	WB,IHC,ICC/IF
Species Reactivity	Human,Mouse,Rat
Immunogen Description	A synthetic peptide of human Activin A Receptor Type IB
Conjugates	Unconjugated
Modification	Unmodification
Other Names	ALK4; SKR2; ACTRIB; ACVRLK4
Accession No.	Swiss-Prot:P36896GeneID:91
Uniprot	P36896
GeneID	91
Calculated MW	52kDa
Concentration	1.2 mg/ml
Formulation	Rabbit IgG in phosphate buffered saline , pH 7.4, 150mM NaCl, 0.02% sodium azide and 50% glycerol.
Storage	Store at 4°C short term. Aliquot and store at -20°C long term. Avoid freeze/thaw cycles.

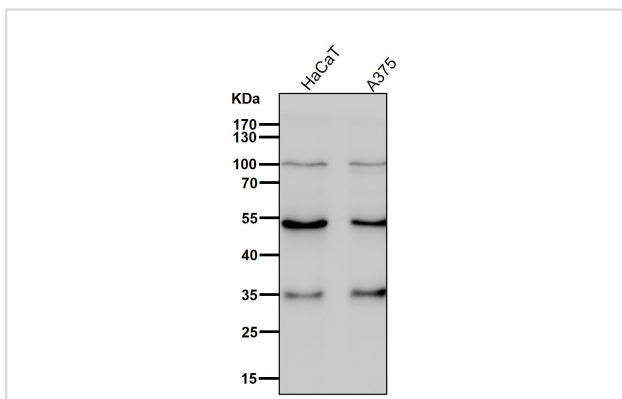
## Application Details

WB 1:500~1:2000 IHC 1:100~1:500 ICC/IF 1:50~1:200

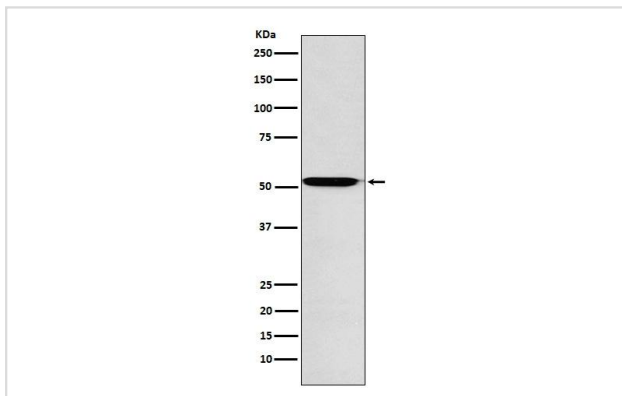
## Images



All lanes use the Antibody at 1:1K dilution for 1 hour at room temperature.



All lanes use the Antibody at 1:1K dilution for 1 hour at room temperature.



Western blot analysis of ACVR1B expression in U87-MG cell lysate.

## Background

On ligand binding, forms a receptor complex consisting of two type II and two type I transmembrane serine/threonine kinases. Type II receptors phosphorylate and activate type I receptors which autophosphorylate, then bind and activate SMAD transcriptional regulators. Phosphorylates TDP2.

Note: This product is for in vitro research use only