

ALDH1L1 Rabbit mAb

Catalog No: #52130

Package Size: #52130-1 50ul #52130-2 100ul

Orders: order@signalwayantibody.com

Support: tech@signalwayantibody.com

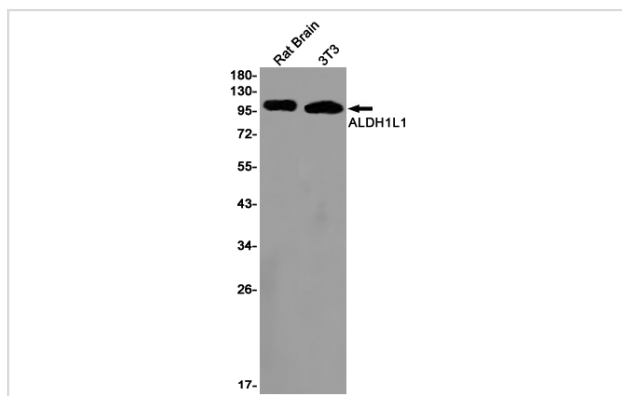
Description

Product Name	ALDH1L1 Rabbit mAb
Host Species	Recombinant Rabbit
Clonality	Monoclonal antibody
Clone No.	S06-2E9
Isotype	Rabbit IgG
Purification	Affinity Purified
Applications	WB
Species Reactivity	Human,Mouse,Rat
Immunogen Description	A synthetic peptide of human ALDH1L1
Conjugates	Unconjugated
Modification	Unmodification
Other Names	FDH; FTHFD; 10-FTHF; 10-FTHFDH
Accession No.	Swiss-Prot:O75891GeneID:10840
Uniprot	O75891
GeneID	10840
Calculated MW	Calculated MW: 99 kDa; Observed MW: 99 kDa
Concentration	0.3 mg/ml
Formulation	50mM Tris-Glycine(pH 7.4), 0.15M NaCl, 40% Glycerol, 0.01% Sodium azide and 0.05% BSA
Storage	Store at 4°C short term. Aliquot and store at -20°C long term. Avoid freeze/thaw cycles.

Application Details

WB: 1/1000-1/5000

Images



Western blot detection of ALDH1L1 in Rat Brain,3T3 cell lysates using ALDH1L1 Rabbit mAb(1:1000 diluted).Predicted band size:99kDa.Observed band size:99kDa.

Background

Swiss-Prot Acc.O75891.CautionThe phosphoserine observed at Ser-354 in PubMed:24275569 may result from secondary neutral loss of pantetheine from the phosphodiester linked cofactor.

Note: This product is for in vitro research use only