

alpha 1a Adrenergic Receptor Rabbit mAb

Catalog No: #52135



Package Size: #52135-1 50ul #52135-2 100ul

Orders: order@signalwayantibody.com
Support: tech@signalwayantibody.com

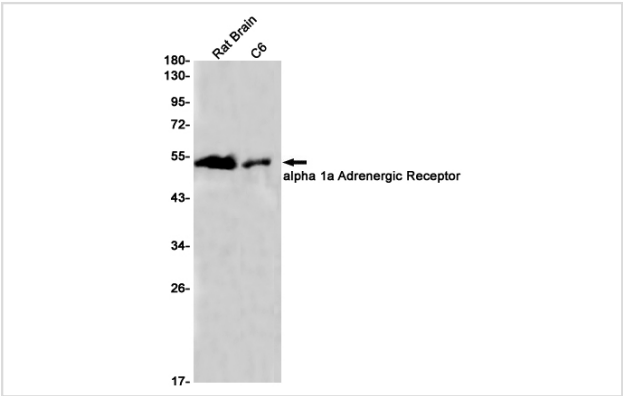
Description

Product Name	alpha 1a Adrenergic Receptor Rabbit mAb
Host Species	Recombinant Rabbit
Clonality	Monoclonal antibody
Clone No.	S04-8B8
Isotype	Rabbit IgG
Purification	Affinity Purified
Applications	WB
Species Reactivity	Human,Mouse,Rat
Immunogen Description	A synthetic peptide of human alpha 1a Adrenergic Receptor
Conjugates	Unconjugated
Modification	Unmodification
Other Names	ADRA1C; ADRA1L1; ALPHA1AAR
Accession No.	Swiss-Prot:P35348GenelD:148
Uniprot	P35348
GenelD	148
Calculated MW	Calculated MW: 52 kDa; Observed MW: 52 kDa
Concentration	0.3 mg/ml
Formulation	50mM Tris-Glycine(pH 7.4), 0.15M NaCl, 40% Glycerol, 0.01% Sodium azide and 0.05% BSA
Storage	Store at 4°C short term. Aliquot and store at -20°C long term. Avoid freeze/thaw cycles.

Application Details

WB: 1/1000-1/5000;

Images



Western blot detection of alpha 1a Adrenergic Receptor in Rat Brain,C6 cell lysates using alpha 1a Adrenergic Receptor Rabbit mAb(1:1000 diluted).Predicted band size:52KDa.Observed band size:52KDa.

Background

Swiss-Prot Acc.P35348.This alpha-adrenergic receptor mediates its action by association with G proteins that activate a phosphatidylinositol-calcium second messenger system. Its effect is mediated by G(q) and G(11) proteins. Nuclear ADRA1A-ADRA1B heterooligomers regulate phenylephrine(PE)-stimulated ERK signaling in cardiac myocytes.

Note: This product is for in vitro research use only