

## alpha Internexin Rabbit mAb

Catalog No: #52137

Package Size: #52137-1 50ul #52137-2 100ul

Orders: order@signalwayantibody.com

Support: tech@signalwayantibody.com

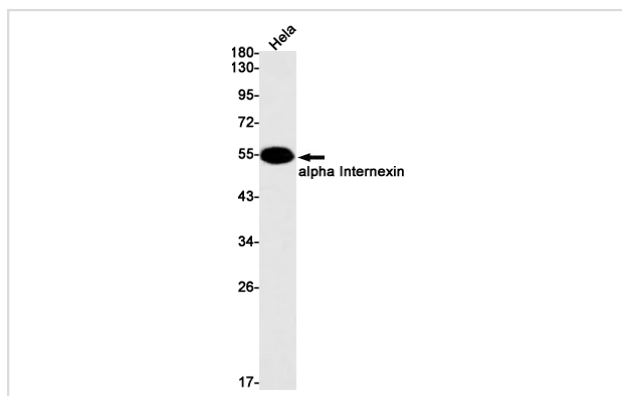
## Description

Product Name	alpha Internexin Rabbit mAb
Host Species	Recombinant Rabbit
Clonality	Monoclonal antibody
Clone No.	S03-6H1
Isotype	Rabbit IgG
Purification	Affinity Purified
Applications	WB
Species Reactivity	Human,Mouse,Rat
Immunogen Description	A synthetic peptide of human alpha Internexin
Conjugates	Unconjugated
Modification	Unmodification
Other Names	NEF5; NF-66; TXBP-1
Accession No.	Swiss-Prot:Q16352GeneID:9118
Uniprot	Q16352
GeneID	9118
Calculated MW	Calculated MW: 55 kDa; Observed MW: 55 kDa
Concentration	0.3 mg/ml
Formulation	50mM Tris-Glycine(pH 7.4), 0.15M NaCl, 40% Glycerol, 0.01% Sodium azide and 0.05% BSA
Storage	Store at 4°C short term. Aliquot and store at -20°C long term. Avoid freeze/thaw cycles.

## Application Details

WB: 1/2000-1/10000

## Images



Western blot detection of alpha Internexin in HeLa cell lysates using alpha Internexin Rabbit mAb(1:1000 diluted). Predicted band size:55kDa.Observed band size:55kDa.

## Background

---

Swiss-Prot Acc.Q16352.Class-IV neuronal intermediate filament that is able to self-assemble. It is involved in the morphogenesis of neurons. It may form an independent structural network without the involvement of other neurofilaments or it may cooperate with NF-L to form the filamentous backbone to which NF-M and NF-H attach to form the cross-bridges.

---

Note: This product is for in vitro research use only