

## Angiotensin Converting Enzyme 1 Rabbit mAb

Catalog No: #52144

Package Size: #52144-1 50ul #52144-2 100ul

Orders: order@signalwayantibody.com

Support: tech@signalwayantibody.com

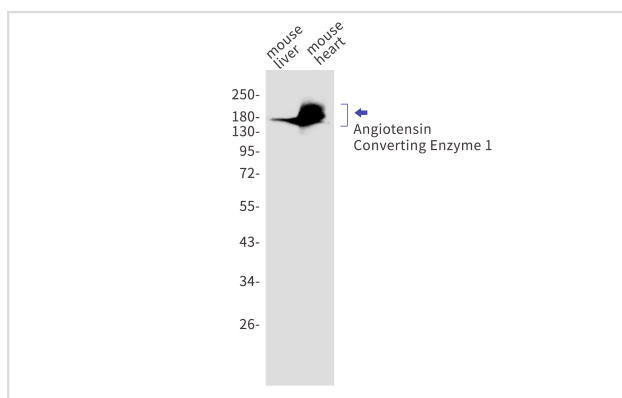
## Description

Product Name	Angiotensin Converting Enzyme 1 Rabbit mAb
Host Species	Recombinant Rabbit
Clonality	Monoclonal antibody
Clone No.	S01-9E3
Isotype	Rabbit IgG
Purification	Affinity Purified
Applications	WB
Species Reactivity	Mouse,Rat
Immunogen Description	Recombinant protein of mouse Angiotensin Converting Enzyme 1
Conjugates	Unconjugated
Modification	Unmodification
Other Names	ACE;Dipeptidyl carboxypeptidase I;Kininase II
Accession No.	Swiss-Prot:P09470GenElD:11421
Uniprot	P09470
GenElD	11421
Calculated MW	Calculated MW: 151 kDa; Observed MW: 180 kDa
Concentration	0.3 mg/ml
Formulation	50mM Tris-Glycine(pH 7.4), 0.15M NaCl, 40% Glycerol, 0.01% Sodium azide and 0.05% BSA
Storage	Store at 4°C short term. Aliquot and store at -20°C long term. Avoid freeze/thaw cycles.

## Application Details

WB: 1/1000;

## Images



Western blot detection of Angiotensin Converting Enzyme 1 in mouse liver, mouse heart cell lysates using Angiotensin Converting Enzyme 1 Rabbit mAb (1:1000 diluted). Predicted band size: 151 kDa. Observed band size: 180 kDa.

## Background

---

Swiss-Prot Acc.P09470.Angiotensin-converting enzyme

---

Note: This product is for in vitro research use only