

ATG12 Rabbit mAb

Catalog No: #52150

Package Size: #52150-1 50ul #52150-2 100ul

Orders: order@signalwayantibody.com

Support: tech@signalwayantibody.com

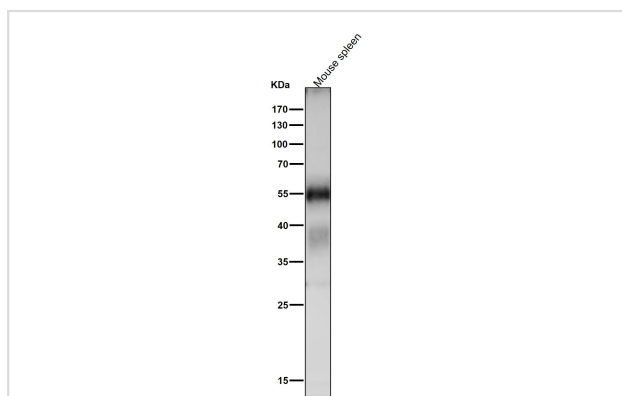
Description

Product Name	ATG12 Rabbit mAb
Clone No.	S08-2F4
Isotype	Rabbit IgG
Purification	Affinity-chromatography
Applications	WB,IHC,ICC/IF
Species Reactivity	Human
Immunogen Description	A synthetic peptide of human Apg12
Conjugates	Unconjugated
Modification	Unmodification
Other Names	APG12; FBR93; APG12L; HAPG12
Accession No.	Swiss-Prot:O94817GeneID:9140
Uniprot	O94817
GeneID	9140
Calculated MW	20,55kDa
Formulation	Rabbit IgG in phosphate buffered saline , pH 7.4, 150mM NaCl, 0.02% sodium azide and 50% glycerol.
Storage	Store at 4°C short term. Aliquot and store at -20°C long term. Avoid freeze/thaw cycles.

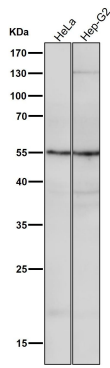
Application Details

WB 1:1000~1:5000 IHC 1:50~1:200 ICC/IF 1:50~1:200

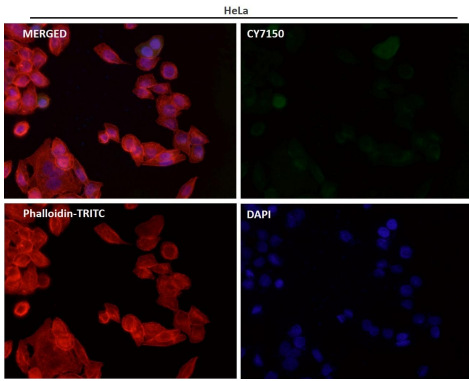
Images



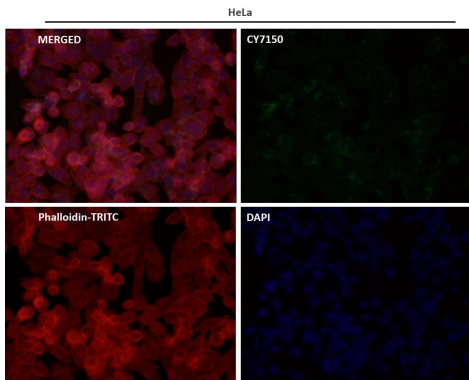
All lanes use the Antibody at 1:1K dilution for 1 hour at room temperature.



All lanes use the Antibody at 1:1K dilution for 1 hour at room temperature.



Immunofluorescent analysis using the Antibody at 1:50 dilution.



Immunofluorescent analysis using the Antibody at 1:50 dilution.

Background

Swiss-Prot Acc.O94817.Ubiquitin-like protein involved in autophagy vesicles formation. Conjugation with ATG5 through a ubiquitin-like conjugating system involving also ATG7 as an E1-like activating enzyme and ATG10 as an E2-like conjugating enzyme, is essential for its function. The ATG12-ATG5 conjugate acts as an E3-like enzyme which is required for lipidation of ATG8 family proteins and their association to the vesicle membranes.

Note: This product is for in vitro research use only