

APPL Rabbit mAb

Catalog No: #52152

Package Size: #52152-1 50ul #52152-2 100ul

Orders: order@signalwayantibody.com

Support: tech@signalwayantibody.com

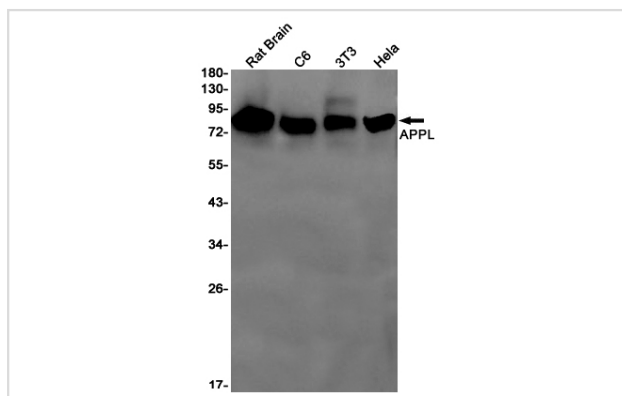
Description

Product Name	APPL Rabbit mAb
Host Species	Recombinant Rabbit
Clonality	Monoclonal antibody
Clone No.	S05-8D5
Isotype	Rabbit IgG
Purification	Affinity Purified
Applications	WB IHC
Species Reactivity	Human,Mouse,Rat
Immunogen Description	A synthetic peptide of human APPL
Conjugates	Unconjugated
Modification	Unmodification
Other Names	APPL; MODY14; DIP13alpha
Accession No.	Swiss-Prot:Q9UKG1GenelD:26060
Uniprot	Q9UKG1
GenelD	26060
Calculated MW	Calculated MW: 80 kDa; Observed MW: 80 kDa
Concentration	0.3 mg/ml
Formulation	50mM Tris-Glycine(pH 7.4), 0.15M NaCl, 40% Glycerol, 0.01% Sodium azide and 0.05% BSA
Storage	Store at 4°C short term. Aliquot and store at -20°C long term. Avoid freeze/thaw cycles.

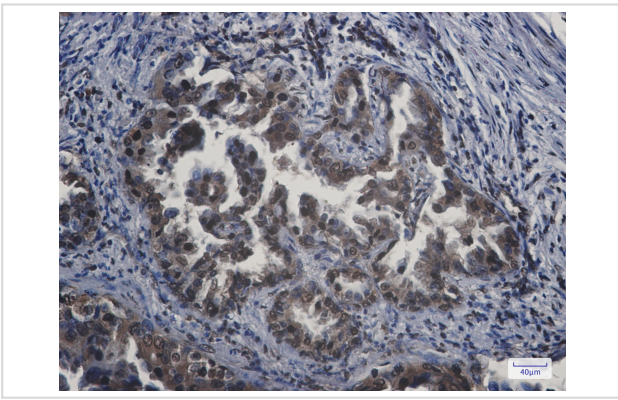
Application Details

WB: 1/1000-1/5000; IHC: 1/20

Images



Western blot detection of APPL in Rat Brain, C6, 3T3, HeLa cell lysates using APPL Rabbit mAb (1:1000 diluted). Predicted band size: 80 kDa. Observed band size: 80 kDa.



Immunohistochemistry of APPL in paraffin-embedded Human lung cancer tissue using APPL Rabbit mAb at dilution 1/20

Background

Swiss-Prot Acc.Q9UKG1.Adapter protein that interacts with proteins involved in different cellular signaling pathways. Required for the regulation of cell proliferation in response to extracellular signals from an early endosomal compartment. Links Rab5 to nuclear signal transduction. Involved in the regulation of the insulin receptor signaling pathway.

Note: This product is for in vitro research use only