

## Aquaporin 1 Rabbit mAb

Catalog No: #52154

Package Size: #52154-1 50ul #52154-2 100ul

Orders: order@signalwayantibody.com

Support: tech@signalwayantibody.com

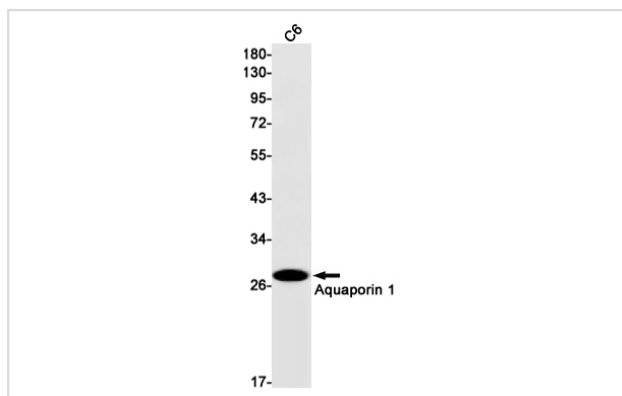
## Description

Product Name	Aquaporin 1 Rabbit mAb
Host Species	Recombinant Rabbit
Clonality	Monoclonal antibody
Clone No.	S03-7G5
Isotype	Rabbit IgG
Purification	Affinity Purified
Applications	WB IHC
Species Reactivity	Human,Mouse,Rat
Immunogen Description	A synthetic peptide of human Aquaporin 1
Conjugates	Unconjugated
Modification	Unmodification
Other Names	CO; CHIP28; AQP-CHIP
Accession No.	Swiss-Prot:P29972GenelD:358
Uniprot	P29972
GenelD	358
Calculated MW	Calculated MW: 29 kDa; Observed MW: 29 kDa
Concentration	0.3 mg/ml
Formulation	50mM Tris-Glycine(pH 7.4), 0.15M NaCl, 40% Glycerol, 0.01% Sodium azide and 0.05% BSA
Storage	Store at 4°C short term. Aliquot and store at -20°C long term. Avoid freeze/thaw cycles.

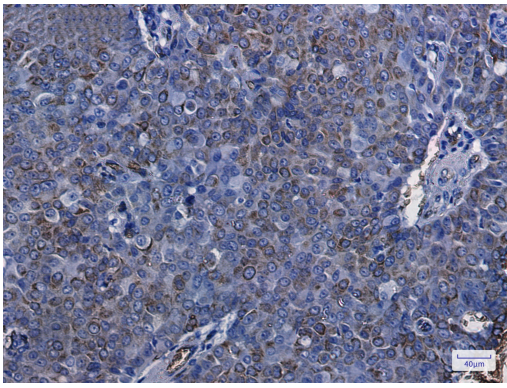
## Application Details

WB: 1/1000-1/2000; IHC: 1/50-1/200

## Images



Western blot detection of Aquaporin 1 in C6 cell lysates using Aquaporin 1 Rabbit mAb(1:1000 diluted).Predicted band size:29kDa.Observed band size:29kDa.



Immunohistochemistry of Aquaporin 1 in paraffin-embedded Human breast cancer tissue using Aquaporin 1 Rabbit mAb at dilution 1/100

## Background

Swiss-Prot Acc.P29972. Forms a water-specific channel that provides the plasma membranes of red cells and kidney proximal tubules with high permeability to water, thereby permitting water to move in the direction of an osmotic gradient.

Note: This product is for in vitro research use only