

ASS1 Rabbit mAb

Catalog No: #52160

Package Size: #52160-1 50ul #52160-2 100ul

Orders: order@signalwayantibody.com

Support: tech@signalwayantibody.com

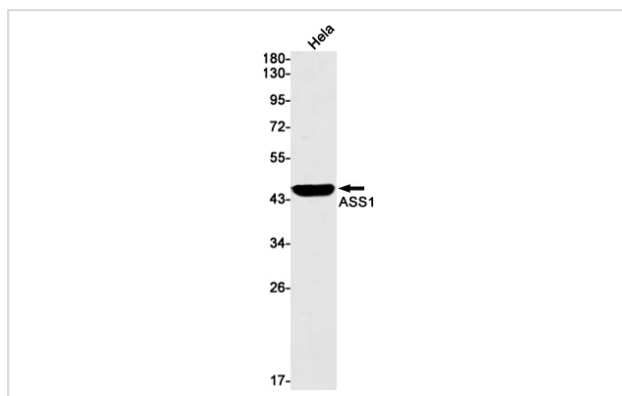
Description

Product Name	ASS1 Rabbit mAb
Host Species	Recombinant Rabbit
Clonality	Monoclonal antibody
Clone No.	S02-7A8
Isotype	Rabbit IgG
Purification	Affinity Purified
Applications	WB IHC IF
Species Reactivity	Human,Mouse,Rat
Immunogen Description	A synthetic peptide of human ASS1
Conjugates	Unconjugated
Modification	Unmodification
Other Names	Argininosuccinate synthase 1; ASS; ass1; ASSA; Citrulline aspartate ligase; CTLN1;
Accession No.	Swiss-Prot:P00966GenelD:445
Uniprot	P00966
GenelD	445
Calculated MW	Calculated MW: 47 kDa; Observed MW: 47 kDa
Concentration	0.3 mg/ml
Formulation	50mM Tris-Glycine(pH 7.4), 0.15M NaCl, 40% Glycerol, 0.01% Sodium azide and 0.05% BSA
Storage	Store at 4°C short term. Aliquot and store at -20°C long term. Avoid freeze/thaw cycles.

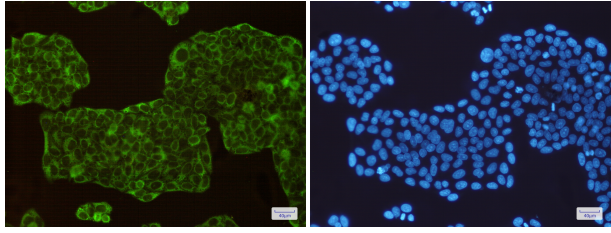
Application Details

WB: 1/2000; IHC: 1/500; ICC/IF: 1/20-1/50;

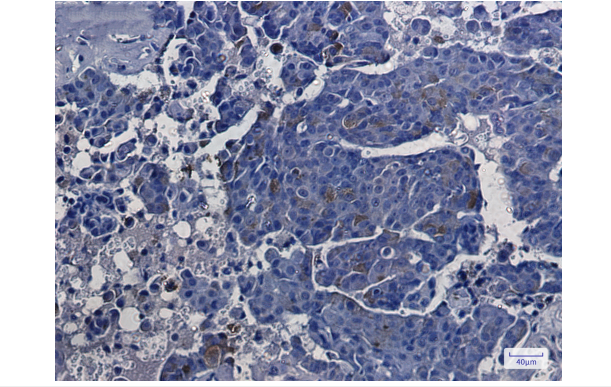
Images



Western blot detection of ASS1 in HeLa cell lysates using ASS1 Rabbit mAb(1:1000 diluted).Predicted band size:47kDa.Observed band size:47kDa.



Immunofluorescence of ASS1(green) in HeLa cells using ASS1 Rabbit mAb at dilution 1/200, and DAPI(blue)



Immunohistochemistry of ASS1 in paraffin-embedded Human breast cancer tissue using ASS1 Rabbit mAb at dilution 1/1

Background

Swiss-Prot Acc.P00966. One of the enzymes of the urea cycle, the metabolic pathway transforming neurotoxic ammonia produced by protein catabolism into innocuous urea in the liver of ureotelic animals. Catalyzes the formation of arginosuccinate from aspartate, citrulline and ATP and together with ASL it is responsible for the biosynthesis of arginine in most body tissues.

Note: This product is for in vitro research use only